

Report No.: 18220WC10201902S

Test Report

Client Name : EcoFlow Inc.

Address : Factory Building A202, Founder Technology Industrial
Park, Longteng Community, Shiyan Sub-district, Baoan ,
Shenzhen, Guangdong, China

Product Name : Portable Power Station

Date : Oct. 15, 2021

Shenzhen Anbotech Compliance Laboratory Limited**Shenzhen Anbotech Compliance Laboratory Limited**Address: 1/F., Building D, Sogood Science and Technology Park, Sanwei Community,
Hangcheng Street, Bao'an District, Shenzhen, Guangdong, China.

Tel: (86) 755-26066440 Fax: (86) 755-26014772 Email: service@anbotech.com



Hotline

400-003-0500

www.anbotech.com

TEST REPORT

IEC 62368-1

Audio/video, information and communication technology equipment

Part 1: Safety requirements

Report Number : 18220WC10201902S

Date of issue : Oct. 15, 2021

Total number of pages : 84 pages

Applicant's name : EcoFlow Inc.

Address : Factory Building A202, Founder Technology Industrial Park, Longteng Community, Shiyan Sub-district, Baoan , Shenzhen, Guangdong, China

Test specification:

Standard : IEC 62368-1:2014 (Second Edition) and
EN 62368-1:2014 +A11:2017

Test procedure : Type Test

Non-standard test method : N/A

General disclaimer:

The test results presented in this report relate only to the object tested.

This report shall not be reproduced, except in full, without the written approval of the Issuing Shenzhen Anbotek Compliance Laboratory Limited. The authenticity of this Test Report and its contents can be verified by Shenzhen Anbotek Compliance Laboratory Limited, responsible for this Test Report.

Testing procedure and testing location:



Testing Laboratory:

Shenzhen Anbotek Compliance Laboratory Limited

Testing location/ address :

1/F, Building D, Sogood Science and Technology Park,
Sanwei community, Hangcheng Street, Bao'an District,
Shenzhen, Guangdong, China.518102

Tested by (name + signature) : Amina Li



Approved by (name + signature)....: Smile Tian



Shenzhen Anbotek Compliance Laboratory Limited

Address: 1/F., Building D, Sogood Science and Technology Park, Sanwei Community,
Hangcheng Street, Bao'an District, Shenzhen, Guangdong, China.

Tel: (86) 755-26066440 Fax: (86) 755-26014772 Email: service@anbotek.com



Hotline

400-003-0500

www.anbotek.com

Test Item description	Portable Power Station
Trade Mark	ECOFLOW
Manufacturer	Same as applicant
Model/Type reference	EFD310
Ratings	<p>Battery Capacity: 2016Wh, 50.4V===</p> <p>AC Input: 220-240V~, 10A, 50/60Hz</p> <p>DC Input:11-100V===10A, 800W MAX</p> <p>Output: 2786W</p> <p>12V Output: 12.6V===10A, 126W MAX</p> <p>AC Output(x4): 220V~, 10A, 50/60Hz, 2400W(MAX:4600W)</p> <p>USB-A Output(x2): 5V===2.4A, (MAX:12W)</p> <p>USB-A(x2): 5V===2.4A, 9V===2A, 12V===1.5A, (MAX:18W)</p> <p>USB-C(x2): 5/9/12/15/20V===5A, (MAX:100W)</p>

<p>Tests performed (name of test and test clause):</p> <p>The submitted samples were found to comply with the requirements of:</p> <p>Electrical safety</p> <ul style="list-style-type: none"> – IEC 62368-1:2014 (Second Edition) – EN 62368-1:2014 +A11:2017 	<p>Testing location:</p> <p>Shenzhen Anbotech Compliance Laboratory Limited</p> <p>1/F, Building D, Sogood Science and Technology Park, Sanwei community, Hangcheng Street, Bao'an District, Shenzhen, Guangdong, China.518102</p>
<p>List of countries addressed: EUROPEAN GROUP DIFFERENCES AND NATIONAL DIFFERENCES</p> <p>The product fulfils the requirements of EN 62368-1:2014 +A11:2017</p>	
<p>Statement concerning the uncertainty of the measurement systems used for the tests (may be required by the product standard or client)</p> <p><input type="checkbox"/> Internal procedure used for type testing through which traceability of the measuring uncertainty has been established:</p> <p>Procedure number, issue date and title:</p> <p>Calculations leading to the reported values are on file with the NCB and testing laboratory that conducted the testing.</p> <p><input checked="" type="checkbox"/> Statement not required by the standard used for type testing</p>	

Copy of marking plate:

The artwork below may be only a draft. The use of certification marks on a product must be authorized by the respective NCBs that own these marks.

EcoFlow DELTA Max(2000)		
Portable Power Station/station électronique portable		
Model/Modèle: EFD310		www.ecoflow.com
Capacity/Capacité: 2016Wh 50.4V		 Keep dry
Discharge Temperature/Température d'utilisation: -4 ~ 113°F		
Charge Temperature/Température de recharge: 32 ~ 113°F		
AC Input/entrée: 220-240V- 10A 50Hz/60Hz		This device complies with Part 15 of the FCC Rules.
X-Stream Charge Input/entrée: 2000W Max		
Solar/Solaire/DC Input/entrée: 11-100V 10A 800W Max		EcoFlow Inc.
Total Output/sortie totale: 2786W		Made in China
12V Output/sortie: 12.6V 10A 126W Max		
AC Output/sortie(×4): 230V- 10A 50Hz/60Hz 2400W(Surge 4600W)total		
USB-A Output/sortie(×2): 5V 2.4A 12W Max per port		
USB-A Fast Charge Output/rapide sortie(×2): 5V 2.4A 9V 2A 12V 1.5A 18W Max per port		
USB-C Output/sortie(×2): 5/9/12/15/20V 5A 100W Max per port		
   		

Note:

The height dimension of CE mark should not be less than 5mm, the height dimension of WEEE symbol should not be less than 7mm.

According to the EU directives which have been aligned with EU NLF (new legislative framework), both of manufacturer and importer's name and address shall be affixed on the product or, where that is not possible, on its packaging or in a document accompanying the product before the product is placed on the EU market.

Shenzhen Anbotek Compliance Laboratory Limited

Address: 1/F., Building D, Sogood Science and Technology Park, Sanwei Community, Hangcheng Street, Bao'an District, Shenzhen, Guangdong, China.

Tel: (86) 755-26066440 Fax: (86) 755-26014772 Email: service@anbotek.com

**Hotline**

400-003-0500

www.anbotek.com

TEST ITEM PARTICULARS:	
Classification of use by	<input checked="" type="checkbox"/> Ordinary person <input checked="" type="checkbox"/> Instructed person <input checked="" type="checkbox"/> Skilled person <input checked="" type="checkbox"/> Children likely to be present
Supply Connection	<input checked="" type="checkbox"/> AC Mains <input type="checkbox"/> DC Mains <input type="checkbox"/> External Circuit - not Mains connected - <input type="checkbox"/> ES1 <input type="checkbox"/> ES2 <input type="checkbox"/> ES3
Supply % Tolerance	<input checked="" type="checkbox"/> +10%/-10% <input type="checkbox"/> +20%/-15% <input type="checkbox"/> + ____ %/ - ____ % <input type="checkbox"/> None: Not directly connected to the mains
Supply Connection – Type	<input checked="" type="checkbox"/> pluggable equipment type A - <input type="checkbox"/> non-detachable supply cord <input checked="" type="checkbox"/> appliance coupler <input type="checkbox"/> direct plug-in <input type="checkbox"/> mating connector <input type="checkbox"/> pluggable equipment type B - <input type="checkbox"/> non-detachable supply cord <input type="checkbox"/> appliance coupler <input type="checkbox"/> permanent connection <input type="checkbox"/> mating connector <input type="checkbox"/> other:
Considered current rating of protective device as part of building or equipment installation	16A (20A for US/Canada, Japan) Installation location: <input checked="" type="checkbox"/> building; <input type="checkbox"/> equipment
Equipment mobility	<input checked="" type="checkbox"/> movable <input type="checkbox"/> hand-held <input type="checkbox"/> transportable <input type="checkbox"/> stationary <input type="checkbox"/> for building-in <input type="checkbox"/> direct plug-in <input type="checkbox"/> rack-mounting <input type="checkbox"/> wall-mounted
Over voltage category (OVC)	<input type="checkbox"/> OVC I <input checked="" type="checkbox"/> OVC II <input type="checkbox"/> OVC III <input type="checkbox"/> OVC IV <input type="checkbox"/> other:
Class of equipment	<input type="checkbox"/> Class I <input checked="" type="checkbox"/> Class II <input type="checkbox"/> Class III <input type="checkbox"/> Class II with functional earthing <input type="checkbox"/> Not classified
Access location	<input type="checkbox"/> restricted access area <input checked="" type="checkbox"/> N/A
Pollution degree (PD)	<input type="checkbox"/> PD 1 <input checked="" type="checkbox"/> PD 2 <input type="checkbox"/> PD 3
Manufacturer's specified maxium operating ambient:	45°C
IP protection class	<input checked="" type="checkbox"/> IPX0
Power Systems	<input type="checkbox"/> TN <input type="checkbox"/> TT <input type="checkbox"/> IT - ____ V _{L-L} <input type="checkbox"/> dc mains <input type="checkbox"/> N/A
Altitude during operation (m)	<input checked="" type="checkbox"/> 2000 m or less <input type="checkbox"/> ____ m
Altitude of test laboratory (m)	<input type="checkbox"/> 2000 m or less <input checked="" type="checkbox"/> <500 m
Mass of equipment (kg)	<input checked="" type="checkbox"/> Approx. >7 kg

Possible test case verdicts:	
- test case does not apply to the test object.....:	N/A
- test object does meet the requirement	P (Pass)
- test object does not meet the requirement	F (Fail)
Testing:	
Date of receipt of test item	2021-08-31
Date (s) of performance of tests	2021-08-31 to 2021-09-15
General remarks:	
<p>"(See Enclosure #)" refers to additional information appended to the report. "(See appended table)" refers to a table appended to the report.</p> <p>Throughout this report a <input type="checkbox"/> comma / <input checked="" type="checkbox"/> point is used as the decimal separator.</p> <p>Manufacturer's Declaration per sub-clause 4.2.5 of IEC60335-1:</p> <p>1. Operating Instructions, Ratings Labels and Warnings Labels written in an Accepted or Official Language of the country in question.</p> <p>2. The equipment complies with the National Standards and/or Electrical Codes of the country in question.</p> <p>3. According to the EU directives which have been aligned with EU NLF (new legislative framework), both of manufacturer and importer's name and address shall be affixed on the product or, where that is not possible, on its packaging or in a document accompanying the product before the product is placed on the EU market.</p>	
Name and address of factory (ies)	Same as applicant
General product information and other remarks:	
<p>Product Description –</p> <p>- The EUT is a Portable Power Station which is intended to charging IT equipment.</p> <p>- The maximum operating temperature is 45°C.</p> <p>Before placing the products in the different countries, the manufacturer must ensure that: operating instructions, ratings labels and warnings labels are in an accepted or official language of the country in question; the equipment complies with the national standards and/or electrical codes of the country, province or city or in question.</p>	
<p>Model Differences :</p> <p>N/A</p>	
<p>Additional application considerations – (Considerations used to test a component or sub-assembly) –</p> <p>N/A</p>	

ENERGY SOURCE IDENTIFICATION AND CLASSIFICATION TABLE:

(Note 1: Identify the following six (6) energy source forms based on the origin of the energy.)

(Note 2: The identified classification e.g., ES2, TS1, should be with respect to its ability to cause pain or injury on the body or its ability to ignite a combustible material. Any energy source can be declared Class 3 as a worse case classification e.g. PS3, ES3.

Electrically-caused injury (Clause 5):

(Note: Identify type of source, list sub-assembly or circuit designation and corresponding energy source classification)

Example: +5 V dc input

ES1

Source of electrical energy	Corresponding classification (ES)
All primary circuits	ES3
Secondary circuits (transformer T1 output)	ES2
11VDC Output	ES1
Accessible enclosure	ES1
USB-A(x2) Output terminal	ES1
USB-A(x1) Output terminal	ES1
USB-C(x1) Output terminal	ES1
Cigarette Lighter Output terminal	ES3
AC Output terminal	ES3
Internal circuits (secondary circuits)	ES3

Electrically-caused fire (Clause 6):

(Note: List sub-assembly or circuit designation and corresponding energy source classification)

Example: Battery pack (maximum 85 watts):

PS2

Source of power or PIS	Corresponding classification (PS)
All primary circuits	PS3
Secondary circuits (transformer T1 output)	PS2
11VDC Output	PS1
Accessible enclosure	PS1
USB-A(x2) Output terminal	PS2
USB-A(x1) Output terminal	PS2
USB-C(x1) Output terminal	PS3
Cigarette Lighter Output terminal	PS3
AC Output terminal	PS2
Internal circuits (secondary circuits)	PS3

Injury caused by hazardous substances (Clause 7)

(Note: Specify hazardous chemicals, whether produces ozone or other chemical construction not addressed as part of the component evaluation.)

Example: Liquid in filled component

Glycol

Source of hazardous substances	Corresponding chemical
--------------------------------	------------------------

ENERGY SOURCE IDENTIFICATION AND CLASSIFICATION TABLE:

Battery	N/A
Mechanically-caused injury (Clause 8) (Note: List moving part(s), fan, special installations, etc. & corresponding MS classification based on Table 35.) Example: Wall mount unit MS2	
Source of kinetic/mechanical energy	Corresponding classification (MS)
Sharp edges and corners	MS1
Equipment mass	MS2
DC fan	MS2
Thermal burn injury (Clause 9) (Note: Identify the surface or support, and corresponding energy source classification based on type of part, location, operating temperature and contact time in Table 38.) Example: Hand-held scanner – thermoplastic enclosure TS1	
Source of thermal energy	Corresponding classification (TS)
External enclosure	TS1
Radiation (Clause 10) (Note: List the types of radiation present in the product and the corresponding energy source classification.) Example: DVD – Class 1 Laser Product RS1	
Type of radiation	Corresponding classification (RS)
LED	RS1

Shenzhen Anbotek Compliance Laboratory Limited

Address: 1/F., Building D, Sogood Science and Technology Park, Sanwei Community,
 Hangcheng Street, Bao'an District, Shenzhen, Guangdong, China.

Tel: (86) 755-26066440 Fax: (86) 755-26014772 Email: service@anbotek.com



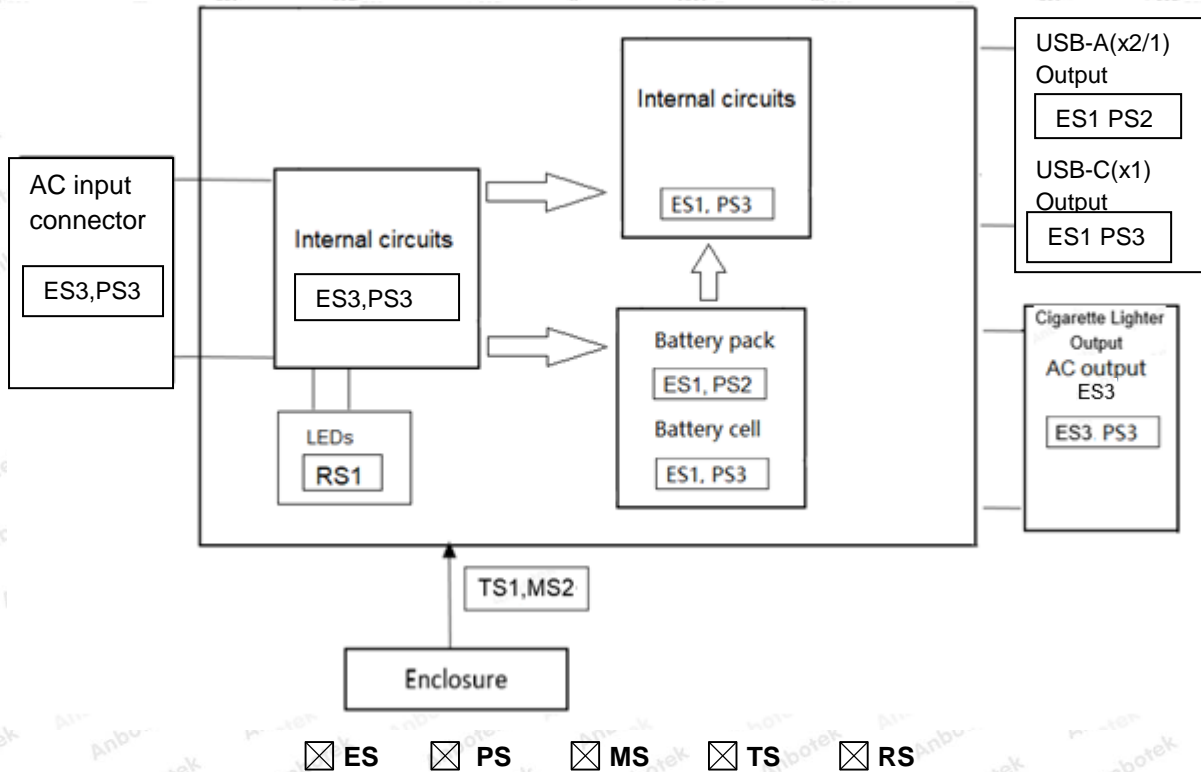
Hotline

400-003-0500

www.anbotek.com

ENERGY SOURCE DIAGRAM

Indicate which energy sources are included in the energy source diagram. Insert diagram below



OVERVIEW OF EMPLOYED SAFEGUARDS

Clause	Possible Hazard			
5.1	Electrically-caused injury			
Body Part (e.g. Ordinary)	Energy Source (ES3: Primary Filter circuit)	Safeguards		
		Basic	Supplementary	Reinforced (Enclosure)
Ordinary person/ Instructed person	ES3: All primary circuits	N/A	N/A	Enclosure, Isolation transformer, isolated switching integrated circuit, Y1- cap.
Ordinary person/ Instructed person	ES3: AC plug (2s after disconnection of AC plug)	Bleeder resistors provided (R18, R19, R26, R27)	Accessible voltage didn't exceed ES2 limits of Table 5 under fault condition	N/A
Skilled person	ES3: All primary circuits; ES2: Secondary circuits (transformer T1 output)	N/A (Unintentional contact with parts during service condition is unlikely)	N/A	N/A (Skill safeguard)
Ordinary person/ Instructed person/ Skilled person	ES1: Secondary circuits ES1: USB-C Output;	N/A	N/A	N/A
Ordinary person, Instructed person	ES3: Internal circuits (secondary circuits)	N/A	N/A	Creepage and Clearance, Transformer
Ordinary person, Instructed person, Skilled person	ES1: Input terminal ES1: USB-A Output terminal ES1: USB-C Output terminal ES1: DC Output terminal ES3: AC Output terminal	N/A	N/A	N/A
6.1	Electrically-caused fire			
Material part (e.g. mouse enclosure)	Energy Source (PS2: 100 Watt circuit)	Safeguards		
		Basic	Supplementary	Reinforced

Shenzhen Anbotek Compliance Laboratory Limited

Address: 1/F., Building D, Sogood Science and Technology Park, Sanwei Community,
Hangcheng Street, Bao'an District, Shenzhen, Guangdong, China.

Tel: (86) 755-26066440 Fax: (86) 755-26014772 Email: service@anbotek.com



Hotline

400-003-0500

www.anbotek.com

All combustible materials within equipment	PS3: Second components/circuit (to outside accessible enclosure) PS3: Battery cell output PS2: Input terminal PS3: USB-C Output terminal PS2: DC Output terminal PS3: AC Output terminal	(N) and (A): 1. No ignition occurred; 2. No parts exceeding 90% of its spontaneous ignition temperature	Control fire spread (S): 1. V-0 PCB used; 2. All other components: at least V-2 except for mounted on min. V-1 material or small parts of combustible material; 3. Transformer complied with Annex G.5.3;	V-0 enclosure provided.
All combustible materials for external equipment which connected to output this power supply	PS3: AC output PS3: Cigarette Lighter Output terminal	N/A	N/A	See instruction
7.1	Injury caused by hazardous substances			
Body Part (e.g., skilled)	Energy Source (hazardous material)	Safeguards		
		Basic	Supplementary	Reinforced
Ordinary person, Skilled person	Battery, Detail see Annex M	N/A	N/A	N/A
8.1	Mechanically-caused injury			
Body Part (e.g. Ordinary)	Energy Source (MS3: High Pressure Lamp)	Safeguards		
		Basic	Supplementary	Reinforced (Enclosure)
Ordinary person, Instructed person, Skilled person	MS1: Sharp edges and corners	N/A	N/A	N/A
Ordinary person, Instructed person, Skilled person	MS2: Equipment mass (> 7kg)	N/A	N/A	See instruction
Ordinary person, Instructed person, Skilled person	MS2: DC fan	N/A	N/A	See instruction
9.1	Thermal Burn			
Body Part (e.g., Ordinary)	Energy Source (TS2)	Safeguards		
		Basic	Supplementary	Reinforced
Ordinary person, Instructed person, Skilled person	TS1: External surfaces	N/A	N/A	N/A
10.1	Radiation			
Body Part (e.g., Ordinary)	Energy Source (Output from audio port)	Safeguards		
		Basic	Supplementary	Reinforced
Ordinary person, Instructed person, Skilled person	RS1: LED light	N/A	N/A	N/A
Supplementary Information: (1) See attached energy source diagram for additional details. (2) "N" – Normal Condition; "A" – Abnormal Condition; "S" Single Fault.				

IEC 62368-1

Clause	Requirement + Test	Result - Remark	Verdict
4	GENERAL REQUIREMENTS		P
4.1.1	Acceptance of materials, components and subassemblies		P
4.1.2	Use of components	(See appended table 4.1.2)	P
4.1.3	Equipment design and construction		P
4.1.15	Markings and instructions.....:	(See Annex F)	P
4.4.4	Safeguard robustness		P
4.4.4.2	Steady force tests.....:	(See Annex T.2, T.4)	P
4.4.4.3	Drop tests.....:	(See Annex T.7)	P
4.4.4.4	Impact tests.....:		N/A
4.4.4.5	Internal accessible safeguard enclosure and barrier tests.....:		N/A
4.4.4.6	Glass Impact tests.....:	No glass used	N/A
4.4.4.7	Thermoplastic material tests.....:	(See Annex T.8)	P
4.4.4.8	Air comprising a safeguard.....:	Considered	P
4.4.4.9	Accessibility and safeguard effectiveness	All safeguards remain effective	P
4.5	Explosion		P
4.6	Fixing of conductors		P
4.6.1	Fix conductors not to defeat a safeguard		P
4.6.2	10 N force test applied to.....:	Internal components	P
4.7	Equipment for direct insertion into mains socket - outlets		N/A
4.7.2	Mains plug part complies with the relevant standard.....:		N/A
4.7.3	Torque (Nm).....:		N/A
4.8	Products containing coin/button cell batteries	No coin/button battery used	N/A
4.8.2	Instructional safeguard		N/A
4.8.3	Battery Compartment Construction		N/A
	Means to reduce the possibility of children removing the battery.....:		—
4.8.4	Battery Compartment Mechanical Tests.....:		N/A
4.8.5	Battery Accessibility		N/A
4.9	Likelihood of fire or shock due to entry of conductive object.....:	(See Annex P)	P




IEC 62368-1

Clause	Requirement + Test	Result - Remark	Verdict
5	ELECTRICALLY-CAUSED INJURY		P
5.2.1	Electrical energy source classifications..... :	(See appended table 5.2)	P
5.2.2	ES1, ES2 and ES3 limits		P
5.2.2.2	Steady-state voltage and current..... :	(See appended table 5.2)	P
5.2.2.3	Capacitance limits..... :		P
5.2.2.4	Single pulse limits..... :		N/A
5.2.2.5	Limits for repetitive pulses..... :		N/A
5.2.2.6	Ringing signals..... :		N/A
5.2.2.7	Audio signals..... :		N/A
5.3	Protection against electrical energy sources		P
5.3.1	General Requirements for accessible parts to ordinary, instructed and skilled persons		P
5.3.2.1	Accessibility to electrical energy sources and safeguards		P
5.3.2.2	Contact requirements		P
	a) Test with test probe from Annex V..... :	Checked by V.1.2 (Figure V.1) and V.1.3, cannot contact with the conductive part for ES3 voltage	P
	b) Electric strength test potential (V)..... :		N/A
	c) Air gap (mm)..... :	Air gap >0.2mm	P
5.3.2.4	Terminals for connecting stripped wire	No such terminals	N/A
5.4	Insulation materials and requirements		P
5.4.1.2	Properties of insulating material		P
5.4.1.3	Humidity conditioning..... :		N/A
5.4.1.4	Maximum operating temperature for insulating materials..... :	(See appended table 5.4.1.4)	P
5.4.1.5	Pollution degree..... :	Pollution degree 2 considered	—
5.4.1.5.2	Test for pollution degree 1 environment and for an insulating compound		N/A
5.4.1.5.3	Thermal cycling		N/A
5.4.1.6	Insulation in transformers with varying dimensions		N/A
5.4.1.7	Insulation in circuits generating starting pulses		N/A
5.4.1.8	Determination of working voltage		P
5.4.1.9	Insulating surfaces		P
5.4.1.10	Thermoplastic parts on which conductive metallic parts are directly mounted		P
5.4.1.10.2	Vicat softening temperature..... :		N/A

Shenzhen Anbotek Compliance Laboratory Limited

Address: 1/F., Building D, Sogood Science and Technology Park, Sanwei Community, Hangcheng Street, Bao'an District, Shenzhen, Guangdong, China.
 Tel: (86) 755-26066440 Fax: (86) 755-26014772 Email: service@anbotek.com

 Hotline
 400-003-0500
 www.anbotek.com

IEC 62368-1

Clause	Requirement + Test	Result - Remark	Verdict
5.4.1.10.3	Ball pressure		N/A
5.4.2	Clearances		P
5.4.2.2	Determining clearance using peak working voltage	(See appended table 5.4.2.2)	P
5.4.2.3	Determining clearance using required withstand voltage	(See appended table 5.4.2.3)	P
	a) a.c. mains transient voltage	2500V peak	—
	b) d.c. mains transient voltage	No such transient voltage	—
	c) external circuit transient voltage	No such transient voltage	—
	d)* transient voltage determined by measurement:	No need to conduct this test	—
5.4.2.4	Determining the adequacy of a clearance using an electric strength test		N/A
5.4.2.5	Multiplication factors for clearances and test voltages		N/A
5.4.3	Creepage distances	(See appended table 5.4.3)	P
5.4.3.1	General		P
5.4.3.3	Material Group	Material group IIIa/IIIb is assumed to be used	—
5.4.4	Solid insulation		P
5.4.4.2	Minimum distance through insulation	(See appended table 5.4.4.2)	P
5.4.4.3	Insulation compound forming solid insulation		N/A
5.4.4.4	Solid insulation in semiconductor devices	No such component used	N/A
5.4.4.5	Cemented joints		N/A
5.4.4.6	Thin sheet material	Insulation tape wrapped on outer of T1, used as reinforced insulation	P
5.4.4.6.1	General requirements		P
5.4.4.6.2	Separable thin sheet material		P
	Number of layers (pcs)	Min. 2 layers	P
5.4.4.6.3	Non-separable thin sheet material	No such material used	N/A
5.4.4.6.4	Standard test procedure for non-separable thin sheet material		N/A
5.4.4.6.5	Mandrel test		N/A
5.4.4.7	Solid insulation in wound components		P
5.4.4.9	Solid insulation at frequencies >30 kHz	(See appended Table 5.4.4.9)	P
5.4.5	Antenna terminal insulation		P
5.4.5.1	General		P
5.4.5.2	Voltage surge test		P
	Insulation resistance (MΩ)		—

Shenzhen Anbotek Compliance Laboratory Limited

Address: 1/F., Building D, Sogood Science and Technology Park, Sanwei Community, Hangcheng Street, Bao'an District, Shenzhen, Guangdong, China.

Tel: (86) 755-26066440 Fax: (86) 755-26014772 Email: service@anbotek.com




Hotline
400-003-0500
www.anbotek.com

IEC 62368-1

Clause	Requirement + Test	Result - Remark	Verdict
5.4.6	Insulation of internal wire as part of supplementary safeguard	No such insulation	P
5.4.7	Tests for semiconductor components and for cemented joints		P
5.4.8	Humidity conditioning		P
	Relative humidity (%).....	93% RH	—
	Temperature (°C)	40 °C	—
	Duration (h)	120 h	—
5.4.9	Electric strength test	(See appended table 5.4.9)	P
5.4.9.1	Test procedure for a solid insulation type test		P
5.4.9.2	Test procedure for routine tests		N/A
5.4.10	Protection against transient voltages between external circuit	No transient voltage from external circuit	N/A
5.4.10.1	Parts and circuits separated from external circuits		N/A
5.4.10.2	Test methods		N/A
5.4.10.2.1	General		N/A
5.4.10.2.2	Impulse test		N/A
5.4.10.2.3	Steady-state test.....		N/A
5.4.11	Insulation between external circuits and earthed circuitry	No such external circuit	N/A
5.4.11.1	Exceptions to separation between external circuits and earth		N/A
5.4.11.2	Requirements		N/A
	Rated operating voltage U_{op} (V).....		—
	Nominal voltage U_{peak} (V).....		—
	Max increase due to variation U_{sp}		—
	Max increase due to ageing ΔU_{sa}		—
	$U_{op} = U_{peak} + \Delta U_{sp} + \Delta U_{sa}$		—
5.5	Components as safeguards		
5.5.1	General	See the following details.	P
5.5.2	Capacitors and RC units		P
5.5.2.1	General requirement	(See appended table 4.1.2)	P
5.5.2.2	Safeguards against capacitor discharge after disconnection of a connector.....	(See appended table 5.5.2.2)	P
5.5.3	Transformers	(See Annex G.5.3)	P
5.5.4	Optocouplers		N/A
5.5.5	Relays		P

Shenzhen Anbotek Compliance Laboratory Limited

Address: 1/F., Building D, Sogood Science and Technology Park, Sanwei Community, Hangcheng Street, Bao'an District, Shenzhen, Guangdong, China.
 Tel: (86) 755-26066440 Fax: (86) 755-26014772 Email: service@anbotek.com

 Hotline
 400-003-0500
 www.anbotek.com

IEC 62368-1

Clause	Requirement + Test	Result - Remark	Verdict
5.5.6	Resistors	No such resistors	N/A
5.5.7	SPD's	No SPDs	N/A
5.5.7.1	Use of an SPD connected to reliable earthing		N/A
5.5.7.2	Use of an SPD between mains and protective earth		N/A
5.5.8	Insulation between the mains and external circuit consisting of a coaxial cable		N/A
5.6	Protective conductor		N/A
5.6.2	Requirement for protective conductors		N/A
5.6.2.1	General requirements		N/A
5.6.2.2	Colour of insulation		N/A
5.6.3	Requirement for protective earthing conductors		N/A
	Protective earthing conductor size (mm ²)		—
5.6.4	Requirement for protective bonding conductors		N/A
5.6.4.1	Protective bonding conductors		N/A
	Protective bonding conductor size (mm ²)		—
	Protective current rating (A)		—
5.6.4.3	Current limiting and overcurrent protective devices		N/A
5.6.5	Terminals for protective conductors		N/A
5.6.5.1	Requirement		N/A
	Conductor size (mm ²), nominal thread diameter (mm)		N/A
5.6.5.2	Corrosion		N/A
5.6.6	Resistance of the protective system		N/A
5.6.6.1	Requirements		N/A
5.6.6.2	Test Method Resistance (Ω)		N/A
5.6.7	Reliable earthing		N/A
5.7	Prospective touch voltage, touch current and protective conductor current		P
5.7.2	Measuring devices and networks		P
5.7.2.1	Measurement of touch current	(See appended table 5.2 or 5.7.4)	P
5.7.2.2	Measurement of prospective touch voltage		P
5.7.3	Equipment set-up, supply connections and earth connections		P
	System of interconnected equipment (separate connections/single connection)	No interconnected equipment	—

Shenzhen Anbotek Compliance Laboratory Limited

Address: 1/F., Building D, Sogood Science and Technology Park, Sanwei Community, Hangcheng Street, Bao'an District, Shenzhen, Guangdong, China.
 Tel: (86) 755-26066440 Fax: (86) 755-26014772 Email: service@anbotek.com



Hotline
 400-003-0500
 www.anbotek.com

IEC 62368-1

Clause	Requirement + Test	Result - Remark	Verdict
	Multiple connections to mains (one connection at a time/simultaneous connections)		—
5.7.4	Earthed conductive accessible parts	Class II equipment	N/A
5.7.5	Protective conductor current	Class II equipment	N/A
	Supply Voltage (V)		—
	Measured current (mA)		—
	Instructional Safeguard		N/A
5.7.6	Prospective touch voltage and touch current due to external circuits	No touch current due to external circuits	N/A
5.7.6.1	Touch current from coaxial cables		N/A
5.7.6.2	Prospective touch voltage and touch current from external circuits		N/A
5.7.7	Summation of touch currents from external circuits	No such external circuits	N/A
	a) Equipment with earthed external circuits Measured current (mA)		N/A
	b) Equipment whose external circuits are not referenced to earth. Measured current (mA)		N/A

6	ELECTRICALLY- CAUSED FIRE		P
6.2	Classification of power sources (PS) and potential ignition sources (PIS)		P
6.2.2	Power source circuit classifications		P
6.2.2.1	General		P
6.2.2.2	Power measurement for worst-case load fault ... :	(See appended table 6.2.2)	P
6.2.2.3	Power measurement for worst-case power source fault	(See appended table 6.2.2)	P
6.2.2.4	PS1	(See appended table 6.2.2)	P
6.2.2.5	PS2	(See appended table 6.2.2)	P
6.2.2.6	PS3	All internal circuits are declared as of PS3	P
6.2.3	Classification of potential ignition sources		P
6.2.3.1	Arcing PIS	(See appended table 6.2.3.1)	P
6.2.3.2	Resistive PIS	(See appended table 6.2.3.2)	P
6.3	Safeguards against fire under normal operating and abnormal operating conditions		P
6.3.1 (a)	No ignition and attainable temperature value less than 90 % defined by ISO 871 or less than 300 °C for unknown materials	(See appended table 5.4.1.4, 6.3.2, 9.0, B.2.6)	P
6.3.1 (b)	Combustible materials outside fire enclosure		N/A

Shenzhen Anbotek Compliance Laboratory Limited

Address: 1/F., Building D, Sogood Science and Technology Park, Sanwei Community, Hangcheng Street, Bao'an District, Shenzhen, Guangdong, China.
 Tel: (86) 755-26066440 Fax: (86) 755-26014772 Email: service@anbotek.com



Hotline
 400-003-0500
 www.anbotek.com

IEC 62368-1

Clause	Requirement + Test	Result - Remark	Verdict
6.4	Safeguards against fire under single fault conditions		P
6.4.1	Safeguard Method	Method of control fire spread used	P
6.4.2	Reduction of the likelihood of ignition under single fault conditions in PS1 circuits		P
6.4.3	Reduction of the likelihood of ignition under single fault conditions in PS2 and PS3 circuits		P
6.4.3.1	General		P
6.4.3.2	Supplementary Safeguards		P
	Special conditions if conductors on printed boards are opened or peeled		N/A
6.4.3.3	Single Fault Conditions :	(See appended table 6.4.3)	P
	Special conditions for temperature limited by fuse		N/A
6.4.4	Control of fire spread in PS1 circuits		N/A
6.4.5	Control of fire spread in PS2 circuits		P
6.4.5.2	Supplementary safeguards :	(See appended tables 4.1.2 and Annex G)	P
6.4.6	Control of fire spread in PS3 circuit	- Parts as in 6.4.5 above; - PCB: V-0 material used; - Fire enclosure provided	P
6.4.7	Separation of combustible materials from a PIS		N/A
6.4.7.1	General..... :	(See tables 6.2.3.1 and 6.2.3.2)	N/A
6.4.7.2	Separation by distance		N/A
6.4.7.3	Separation by a fire barrier		N/A
6.4.8	Fire enclosures and fire barriers	Fire enclosure used	P
6.4.8.1	Fire enclosure and fire barrier material properties		P
6.4.8.2.1	Requirements for a fire barrier		N/A
6.4.8.2.2	Requirements for a fire enclosure	Enclosure material: V-0	P
6.4.8.3	Constructional requirements for a fire enclosure and a fire barrier		N/A
6.4.8.3.1	Fire enclosure and fire barrier openings	No openings	N/A
6.4.8.3.2	Fire barrier dimensions		P
6.4.8.3.3	Top Openings in Fire Enclosure: dimensions (mm) :	More than 15mm distance between the PIS of PS3 and the flank openings plastics enclosure	P
	Needle Flame test		N/A
6.4.8.3.4	Bottom Openings in Fire Enclosure, condition met a), b) and/or c) dimensions (mm) :	More than 15mm distance between the PIS of PS3 and the flank openings plastics enclosure	P

Shenzhen Anbotek Compliance Laboratory Limited

Address: 1/F., Building D, Sogood Science and Technology Park, Sanwei Community, Hangcheng Street, Bao'an District, Shenzhen, Guangdong, China.
 Tel: (86) 755-26066440 Fax: (86) 755-26014772 Email: service@anbotek.com



Hotline
 400-003-0500
 www.anbotek.com

IEC 62368-1

Clause	Requirement + Test	Result - Remark	Verdict
	Flammability tests for the bottom of a fire enclosure		N/A
6.4.8.3.5	Integrity of the fire enclosure, condition met: a), b) or c)		N/A
6.4.8.4	Separation of PIS from fire enclosure and fire barrier distance (mm) or flammability rating	Plastic enclosure is made of V-0 class material	P
6.5	Internal and external wiring		P
6.5.1	Requirements		P
6.5.2	Cross-sectional area (mm ²)	See table 4.1.2	—
6.5.3	Requirements for interconnection to building wiring		N/A
6.6	Safeguards against fire due to connection to additional equipment		P
	External port limited to PS2 or complies with Clause Q.1	Output terminal complies with Annex Q.1	P

7	INJURY CAUSED BY HAZARDOUS SUBSTANCES		P
7.2	Reduction of exposure to hazardous substances		P
7.3	Ozone exposure		N/A
7.4	Use of personal safeguards (PPE)		N/A
	Personal safeguards and instructions		—
7.5	Use of instructional safeguards and instructions		N/A
	Instructional safeguard (ISO 7010)		—
7.6	Batteries.....	See Annex M	P

8	MECHANICALLY-CAUSED INJURY		P
8.1	General		P
8.2	Mechanical energy source classifications	Sharp edges and corners: MS1 classification; Equipment mass: MS2 Classification DC fan: MS2	P
8.3	Safeguards against mechanical energy sources		N/A
8.4	Safeguards against parts with sharp edges and corners		N/A
8.4.1	Safeguards		N/A
8.5	Safeguards against moving parts		P

Shenzhen Anbotek Compliance Laboratory Limited

Address: 1/F., Building D, Sogood Science and Technology Park, Sanwei Community, Hangcheng Street, Bao'an District, Shenzhen, Guangdong, China.
Tel: (86) 755-26066440 Fax: (86) 755-26014772 Email: service@anbotek.com




Hotline
400-003-0500
www.anbotek.com

IEC 62368-1

Clause	Requirement + Test	Result - Remark	Verdict
8.5.1	MS2 or MS3 part required to be accessible for the function of the equipment		P
8.5.2	Instructional Safeguard		—
8.5.4	Special categories of equipment comprising moving parts		N/A
8.5.4.1	Large data storage equipment		N/A
8.5.4.2	Equipment having electromechanical device for destruction of media		N/A
8.5.4.2.1	Safeguards and Safety Interlocks		N/A
8.5.4.2.2	Instructional safeguards against moving parts		P
	Instructional Safeguard		—
8.5.4.2.3	Disconnection from the supply		N/A
8.5.4.2.4	Probe type and force (N)		N/A
8.5.5	High Pressure Lamps		N/A
8.5.5.1	Energy Source Classification		N/A
8.5.5.2	High Pressure Lamp Explosion Test.....		N/A
8.6	Stability	MS2 classification	N/A
8.6.1	Product classification		N/A
	Instructional Safeguard		—
8.6.2	Static stability		N/A
8.6.2.2	Static stability test		N/A
	Applied Force		—
8.6.2.3	Downward Force Test		N/A
8.6.3	Relocation stability test		N/A
	Unit configuration during 10° tilt.....		—
8.6.4	Glass slide test		N/A
8.6.5	Horizontal force test (Applied Force).....		N/A
	Position of feet or movable parts		—
8.7	Equipment mounted to wall or ceiling	Not wall or ceiling mounted equipment	N/A
8.7.1	Mounting Means (Length of screws (mm) and mounting surface)		N/A
8.7.2	Direction and applied force		N/A
8.8	Handles strength		P
8.8.1	Classification		P
8.8.2	Applied Force		P

Shenzhen Anbotek Compliance Laboratory Limited

Address: 1/F., Building D, Sogood Science and Technology Park, Sanwei Community, Hangcheng Street, Bao'an District, Shenzhen, Guangdong, China.
 Tel: (86) 755-26066440 Fax: (86) 755-26014772 Email: service@anbotek.com

 Hotline
 400-003-0500
 www.anbotek.com

IEC 62368-1


Clause	Requirement + Test	Result - Remark	Verdict
8.9	Wheels or casters attachment requirements	No wheels or caster used	N/A
8.9.1	Classification		N/A
8.9.2	Applied force		—
8.10	Carts, stands and similar carriers		N/A
8.10.1	General		N/A
8.10.2	Marking and instructions		N/A
	Instructional Safeguard		—
8.10.3	Cart, stand or carrier loading test and compliance		N/A
	Applied force		—
8.10.4	Cart, stand or carrier impact test		N/A
8.10.5	Mechanical stability		N/A
	Applied horizontal force (N)		—
8.10.6	Thermoplastic temperature stability (°C)		N/A
8.11	Mounting means for rack mounted equipment	Not such equipment	N/A
8.11.1	General		N/A
8.11.2	Product Classification		N/A
8.11.3	Mechanical strength test, variable <i>N</i>		N/A
8.11.4	Mechanical strength test 250N, including end stops		N/A
8.12	Telescoping or rod antennas	No antennas	N/A
	Button/Ball diameter (mm)		—

9	THERMAL BURN INJURY		P
9.2	Thermal energy source classifications	External enclosure: TS1	P
9.3	Safeguard against thermal energy sources		N/A
9.4	Requirements for safeguards		N/A
9.4.1	Equipment safeguard		N/A
9.4.2	Instructional safeguard		N/A

10 *	RADIATION		P
10.2	Radiation energy source classification		P
10.2.1	General classification		P
10.3	Protection against laser radiation	No laser radiation	N/A
	Laser radiation that exists in the equipment:		—
	Normal, abnormal, single-fault.....		N/A
	Instructional safeguard		—

Shenzhen Anbotek Compliance Laboratory Limited

Address: 1/F., Building D, Sogood Science and Technology Park, Sanwei Community,
 Hangcheng Street, Bao'an District, Shenzhen, Guangdong, China.
 Tel: (86) 755-26066440 Fax: (86) 755-26014772 Email: service@anbotek.com


 Hotline
 400-003-0500
 www.anbotek.com

IEC 62368-1

Clause	Requirement + Test	Result - Remark	Verdict
	Tool..... :		—
10.4	Protection against visible, infrared, and UV radiation	RS1	P
10.4.1	General		P
10.4.1.a)	RS3 for Ordinary and instructed persons..... :		N/A
10.4.1.b)	RS3 accessible to a skilled person..... :		N/A
	Personal safeguard (PPE) instructional safeguard..... :		—
10.4.1.c)	Equipment visible, IR, UV does not exceed RS1. :		P
10.4.1.d)	Normal, abnormal, single-fault conditions :		N/A
10.4.1.e)	Enclosure material employed as safeguard is opaque..... :		N/A
10.4.1.f)	UV attenuation..... :		N/A
10.4.1.g)	Materials resistant to degradation UV :		N/A
10.4.1.h)	Enclosure containment of optical radiation..... :		N/A
10.4.1.i)	Exempt Group under normal operating conditions..... :		N/A
10.4.2	Instructional safeguard :		N/A
10.5	Protection against x-radiation	No x-radiation	N/A
10.5.1	X- radiation energy source that exists equipment :		N/A
	Normal, abnormal, single fault conditions		N/A
	Equipment safeguards..... :		N/A
	Instructional safeguard for skilled person..... :		N/A
10.5.3	Most unfavourable supply voltage to give maximum radiation :		—
	Abnormal and single-fault condition :		N/A
	Maximum radiation (pA/kg)..... :		N/A
10.6	Protection against acoustic energy sources		N/A
10.6.1	General		N/A
10.6.2	Classification		N/A
	Acoustic output, dB(A)..... :		N/A
	Output voltage, unweighted r.m.s..... :		N/A
10.6.4	Protection of persons		N/A
	Instructional safeguards :		N/A
	Equipment safeguard prevent ordinary person to RS2..... :		—
	Means to actively inform user of increase sound		—

Shenzhen Anbotek Compliance Laboratory Limited

Address: 1/F., Building D, Sogood Science and Technology Park, Sanwei Community, Hangcheng Street, Bao'an District, Shenzhen, Guangdong, China.
Tel: (86) 755-26066440 Fax: (86) 755-26014772 Email: service@anbotek.com

 Hotline
400-003-0500
www.anbotek.com

IEC 62368-1

Clause	Requirement + Test	Result - Remark	Verdict
	pressure..... :		
	Equipment safeguard prevent ordinary person to RS2..... :		—
10.6.5	Requirements for listening devices (headphones, earphones, etc.)		N/A
10.6.5.1	Corded passive listening devices with analog input		N/A
	Input voltage with 94 dB(A) L_{Aeq} acoustic pressure output..... :		—
10.6.5.2	Corded listening devices with digital input		N/A
	Maximum dB(A)..... :		—
10.6.5.3	Cordless listening device		N/A
	Maximum dB(A)..... :		—

B	NORMAL OPERATING CONDITION TESTS, ABNORMAL OPERATING CONDITION TESTS AND SINGLE FAULT CONDITION TESTS		P
B.2	Normal Operating Conditions		P
B.2.1	General requirements..... :	(See summary of testing & appended test tables)	P
	Audio Amplifiers and equipment with audio amplifiers..... :	No audio amplifier circuits	N/A
B.2.3	Supply voltage and tolerances		P
B.2.5	Input test..... :	(See appended table B.2.5)	P
B.3	Simulated abnormal operating conditions		P
B.3.1	General requirements..... :		P
B.3.2	Covering of ventilation openings	(See appended table B.3)	P
B.3.3	D.C. mains polarity test		N/A
B.3.4	Setting of voltage selector..... :	No such voltage selector	N/A
B.3.5	Maximum load at output terminals..... :	(See appended table B.3)	P
B.3.6	Reverse battery polarity		N/A
B.3.7	Abnormal operating conditions as specified in Clause E.2.		N/A
B.3.8	Safeguards functional during and after abnormal operating conditions	During an abnormal operating condition that does not lead to a single fault condition, all safeguards are remained effective. After restoration of normal operating conditions, all safeguards are compliance with applicable requirements	P

Shenzhen Anbotek Compliance Laboratory Limited

Address: 1/F., Building D, Sogood Science and Technology Park, Sanwei Community, Hangcheng Street, Bao'an District, Shenzhen, Guangdong, China.
 Tel: (86) 755-26066440 Fax: (86) 755-26014772 Email: service@anbotek.com



Hotline
 400-003-0500
 www.anbotek.com

IEC 62368-1

Clause	Requirement + Test	Result - Remark	Verdict
B.4	Simulated single fault conditions		P
B.4.2	Temperature controlling device open or short-circuited	No such controlling device	N/A
B.4.3	Motor tests		N/A
B.4.3.1	Motor blocked or rotor locked increasing the internal ambient temperature	No motors used	N/A
B.4.4	Short circuit of functional insulation		P
B.4.4.1	Short circuit of clearances for functional insulation	(See appended table B.4)	P
B.4.4.2	Short circuit of creepage distances for functional insulation	(See appended table B.4)	P
B.4.4.3	Short circuit of functional insulation on coated printed boards	No coated printed boards	N/A
B.4.5	Short circuit and interruption of electrodes in tubes and semiconductors	(See appended table B.4)	P
B.4.6	Short circuit or disconnect of passive components	(See appended table B.4)	P
B.4.7	Continuous operation of components		N/A
B.4.8	Class 1 and Class 2 energy sources within limits during and after single fault conditions		P
B.4.9	Battery charging under single fault conditions ... :		P

C *	UV RADIATION		N/A
C.1	Protection of materials in equipment from UV radiation	No UV radiation within the EUT	N/A
C.1.2	Requirements		N/A
C.1.3	Test method		N/A
C.2	UV light conditioning test		N/A
C.2.1	Test apparatus		N/A
C.2.2	Mounting of test samples		N/A
C.2.3	Carbon-arc light-exposure apparatus		N/A
C.2.4	Xenon-arc light exposure apparatus		N/A

D *	TEST GENERATORS		N/A
D.1	Impulse test generators		N/A
D.2	Antenna interface test generator		N/A
D.3	Electronic pulse generator		N/A

Shenzhen Anbotek Compliance Laboratory Limited

Address: 1/F., Building D, Sogood Science and Technology Park, Sanwei Community, Hangcheng Street, Bao'an District, Shenzhen, Guangdong, China.
 Tel: (86) 755-26066440 Fax: (86) 755-26014772 Email: service@anbotek.com



Hotline
 400-003-0500
 www.anbotek.com

IEC 62368-1

Clause	Requirement + Test	Result - Remark	Verdict
--------	--------------------	-----------------	---------

E	TEST CONDITIONS FOR EQUIPMENT CONTAINING AUDIO AMPLIFIERS		N/A
E.1	Audio amplifier normal operating conditions	No audio amplifier	N/A
	Audio signal voltage (V)		—
	Rated load impedance (Ω)		
E.2	Audio amplifier abnormal operating conditions		N/A

F	EQUIPMENT MARKINGS, INSTRUCTIONS, AND INSTRUCTIONAL SAFEGUARDS		P
F.1	General requirements		P
	Instructions – Language	English checked	—
F.2	Letter symbols and graphical symbols		P
F.2.1	Letter symbols according to IEC60027-1		P
F.2.2	Graphic symbols IEC, ISO or manufacturer specific		P
F.3	Equipment markings		P
F.3.1	Equipment marking locations	Located on the external enclosure surface	P
F.3.2	Equipment identification markings		P
F.3.2.1	Manufacturer identification	See copy of marking plate	—
F.3.2.2	Model identification	See copy of marking plate and model list	—
F.3.3	Equipment rating markings		P
F.3.3.1	Equipment with direct connection to mains		P
F.3.3.2	Equipment without direct connection to mains		N/A
F.3.3.3	Nature of supply voltage.....	See label	—
F.3.3.4	Rated voltage	See label	—
F.3.3.5	Rated frequency	See label	—
F.3.3.6	Rated current or rated power	See label	—
F.3.3.7	Equipment with multiple supply connections		N/A
F.3.4	Voltage setting device		N/A
F.3.5	Terminals and operating devices		P
F.3.5.1	Mains appliance outlet and socket-outlet markings.....		P
F.3.5.2	Switch position identification marking		P
F.3.5.3	Replacement fuse identification and rating markings.....		N/A
F.3.5.4	Replacement battery identification marking	No replacement battery	N/A
F.3.5.5	Terminal marking location		P

Shenzhen Anbotek Compliance Laboratory Limited

Address: 1/F., Building D, Sogood Science and Technology Park, Sanwei Community, Hangcheng Street, Bao'an District, Shenzhen, Guangdong, China.
 Tel: (86) 755-26066440 Fax: (86) 755-26014772 Email: service@anbotek.com



Hotline
 400-003-0500
 www.anbotek.com

IEC 62368-1

Clause	Requirement + Test	Result - Remark	Verdict
F.3.6	Equipment markings related to equipment classification		P
F.3.6.1	Class I Equipment		N/A
F.3.6.1.1	Protective earthing conductor terminal		N/A
F.3.6.1.2	Neutral conductor terminal		N/A
F.3.6.1.3	Protective bonding conductor terminals		N/A
F.3.6.2	Class II equipment (IEC60417-5172)		P
F.3.6.2.1	Class II equipment with or without functional earth		P
F.3.6.2.2	Class II equipment with functional earth terminal marking		N/A
F.3.7	Equipment IP rating marking :	IPX0	—
F.3.8	External power supply output marking	See copy of marking plate	P
F.3.9	Durability, legibility and permanence of marking		P
F.3.10	Test for permanence of markings		P
F.4	Instructions		P
	a) Equipment for use in locations where children not likely to be present - marking		N/A
	b) Instructions given for installation or initial use		P
	c) Equipment intended to be fastened in place		N/A
	d) Equipment intended for use only in restricted access area		N/A
	e) Audio equipment terminals classified as ES3 and other equipment with terminals marked in accordance F.3.6.1		N/A
	f) Protective earthing employed as safeguard		N/A
	g) Protective earthing conductor current exceeding ES 2 limits		N/A
	h) Symbols used on equipment		P
	i) Permanently connected equipment not provided with all-pole mains switch		N/A
	j) Replaceable components or modules providing safeguard function		N/A
F.5	Instructional safeguards		P
	Where “instructional safeguard” is referenced in the test report it specifies the required elements, location of marking and/or instruction		P

G	COMPONENTS	P
G.1	Switches	N/A

Shenzhen Anbotek Compliance Laboratory Limited

Address: 1/F., Building D, Sogood Science and Technology Park, Sanwei Community, Hangcheng Street, Bao'an District, Shenzhen, Guangdong, China.
 Tel: (86) 755-26066440 Fax: (86) 755-26014772 Email: service@anbotek.com




Hotline
 400-003-0500
 www.anbotek.com

IEC 62368-1

Clause	Requirement + Test	Result - Remark	Verdict
G.1.1	General requirements	No switches used	N/A
G.1.2	Ratings, endurance, spacing, maximum load		N/A
G.2 *	Relays		N/A
G.2.1	General requirements	No relays used	N/A
G.2.2	Overload test		N/A
G.2.3	Relay controlling connectors supply power		N/A
G.2.4	Mains relay, modified as stated in G.2		N/A
G.3 *	Protection Devices		P
G.3.1	Thermal cut-offs	No thermal cut-offs used	N/A
G.3.1.1a) &b)	Thermal cut-outs separately approved according to IEC 60730 with conditions indicated in a) & b)		N/A
G.3.1.1c)	Thermal cut-outs tested as part of the equipment as indicated in c)		N/A
G.3.1.2	Thermal cut-off connections maintained and secure		N/A
G.3.2	Thermal links		N/A
G.3.2.1a)	Thermal links separately tested with IEC 60691	No thermal links used	N/A
G.3.2.1b)	Thermal links tested as part of the equipment		N/A
	Aging hours (H)		—
	Single Fault Condition		—
	Test Voltage (V) and Insulation Resistance (Ω) . :		—
G.3.3	PTC Thermistors	No PTC thermistor used	N/A
G.3.4	Overcurrent protection devices	Approved current fuse provided	P
G.3.5	Safeguards components not mentioned in G.3.1 to G.3.4		N/A
G.3.5.1	Non-resettable devices suitably rated and marking provided		N/A
G.3.5.2	Single faults conditions.....	(See appended Table B.4)	N/A
G.4 *	Connectors		P
G.4.1	Spacings		P
G.4.2	Mains connector configuration	AC inlet used for all models are within their ratings considered acceptable without further evaluation	P
G.4.3	Plug is shaped that insertion into mains socket-outlets or appliance coupler is unlikely	The output connector is such a shape that cannot insertion into a mains socket-outlet	P
G.5	Wound Components		P

Shenzhen Anbotek Compliance Laboratory Limited

Address: 1/F., Building D, Sogood Science and Technology Park, Sanwei Community, Hangcheng Street, Bao'an District, Shenzhen, Guangdong, China.
 Tel:(86) 755-26066440 Fax: (86) 755-26014772 Email: service@anbotek.com

 Hotline
 400-003-0500
 www.anbotek.com

IEC 62368-1

Clause	Requirement + Test	Result - Remark	Verdict
G.5.1	Wire insulation in wound components.....	Approved source of triple insulated wire used as secondary winding for reinforced insulation	P
G.5.1.2 a)	Two wires in contact inside wound component, angle between 45° and 90°	Separated by insulation tube	P
G.5.1.2 b)	Construction subject to routine testing		N/A
G.5.2 *	Endurance test on wound components		N/A
G.5.2.1	General test requirements		N/A
G.5.2.2	Heat run test		N/A
	Time (s)		—
	Temperature (°C)		—
G.5.2.3	Wound Components supplied by mains		N/A
G.5.3	Transformers		P
G.5.3.1	Requirements applied (IEC61204-7, IEC61558-1/-2, and/or IEC62368-1).....	Comply with the requirements as below	P
	Position.....		—
	Method of protection	See G.5.3.3	—
G.5.3.2	Insulation		P
	Protection from displacement of windings.....	Fixed by bobbin and insulation tape	—
G.5.3.3	Overload test	(See append table B.3)	P
G.5.3.3.1	Test conditions		P
G.5.3.3.2	Winding Temperatures testing in the unit		P
G.5.3.3.3	Winding Temperatures - Alternative test method		N/A
G.5.4	Motors		N/A
G.5.4.1	General requirements	No motors used	N/A
	Position		—
G.5.4.2	Test conditions		N/A
G.5.4.3	Running overload test		N/A
G.5.4.4	Locked-rotor overload test		N/A
	Test duration (days)		—
G.5.4.5	Running overload test for d.c. motors in secondary circuits		N/A
G.5.4.5.2	Tested in the unit		N/A
	Electric strength test (V)		—
G.5.4.5.3	Tested on the Bench - Alternative test method; test time (h)		N/A
	Electric strength test (V)		—

Shenzhen Anbotek Compliance Laboratory Limited

Address: 1/F., Building D, Sogood Science and Technology Park, Sanwei Community, Hangcheng Street, Bao'an District, Shenzhen, Guangdong, China.
 Tel: (86) 755-26066440 Fax: (86) 755-26014772 Email: service@anbotek.com



Hotline
 400-003-0500
 www.anbotek.com

IEC 62368-1

Clause	Requirement + Test	Result - Remark	Verdict
G.5.4.6	Locked-rotor overload test for d.c. motors in secondary circuits		N/A
G.5.4.6.2	Tested in the unit		N/A
	Maximum Temperature		N/A
	Electric strength test (V)		N/A
G.5.4.6.3	Tested on the bench - Alternative test method; test time (h)		N/A
	Electric strength test (V)		N/A
G.5.4.7	Motors with capacitors		N/A
G.5.4.8	Three-phase motors		N/A
G.5.4.9	Series motors		N/A
	Operating voltage		—
G.6	Wire Insulation		P
G.6.1	General	Approved source of triple insulated wire used as secondary winding for reinforced insulation	P
G.6.2	Solvent-based enamel wiring insulation		N/A
G.7	Mains supply cords		N/A
G.7.1	General requirements	No mains supply cords provided	N/A
	Type.....		—
	Rated current (A)		—
	Cross-sectional area (mm ²), (AWG).....		—
G.7.2	Compliance and test method		N/A
G.7.3	Cord anchorages and strain relief for non-detachable power supply cords		N/A
G.7.3.2	Cord strain relief		N/A
G.7.3.2.1	Requirements		N/A
	Strain relief test force (N)		—
G.7.3.2.2	Strain relief mechanism failure		N/A
G.7.3.2.3	Cord sheath or jacket position, distance (mm).....		—
G.7.3.2.4	Strain relief comprised of polymeric material		N/A
G.7.4	Cord Entry		N/A
G.7.5	Non-detachable cord bend protection		N/A
G.7.5.1	Requirements		N/A
G.7.5.2	Mass (g)		—
	Diameter (m)		—

Shenzhen Anbotek Compliance Laboratory Limited

Address: 1/F., Building D, Sogood Science and Technology Park, Sanwei Community, Hangcheng Street, Bao'an District, Shenzhen, Guangdong, China.
 Tel: (86) 755-26066440 Fax: (86) 755-26014772 Email: service@anbotek.com



Hotline
 400-003-0500
 www.anbotek.com

IEC 62368-1

Clause	Requirement + Test	Result - Remark	Verdict
	Temperature (°C)		—
G.7.6	Supply wiring space		N/A
G.7.6.2	Stranded wire		N/A
G.7.6.2.1	Test with 8 mm strand		N/A
G.8	Varistors		N/A
G.8.1	General requirements		N/A
G.8.2	Safeguard against shock		N/A
G.8.3	Safeguard against fire		N/A
G.8.3.2	Varistor overload test		N/A
G.8.3.3	Temporary overvoltage		N/A
G.9 *	Integrated Circuit (IC) Current Limiters		N/A
G.9.1 a)	Manufacturer defines limit at max. 5A.		N/A
G.9.1 b)	Limiters do not have manual operator or reset		N/A
G.9.1 c)	Supply source does not exceed 250 VA		—
G.9.1 d)	IC limiter output current (max. 5A)		—
G.9.1 e)	Manufacturers' defined drift		—
G.9.2	Test Program 1		N/A
G.9.3	Test Program 2		N/A
G.9.4	Test Program 3		N/A
G.10 *	Resistors		N/A
G.10.1	General requirements	No such resistors used	N/A
G.10.2	Resistor test		N/A
G.10.3	Test for resistors serving as safeguards between the mains and an external circuit consisting of a coaxial cable		N/A
G.10.3.1	General requirements		N/A
G.10.3.2	Voltage surge test		N/A
G.10.3.3	Impulse test		N/A
G.11	Capacitor and RC units		P
G.11.1	General requirements		P
G.11.2	Conditioning of capacitors and RC units		P
G.11.3	Rules for selecting capacitors		P
G.12	Optocouplers		N/A
	Optocouplers comply with IEC 60747-5-5:2007 Spacing or Electric Strength Test (specify option and test results)		N/A

Shenzhen Anbotek Compliance Laboratory Limited

Address: 1/F., Building D, Sogood Science and Technology Park, Sanwei Community, Hangcheng Street, Bao'an District, Shenzhen, Guangdong, China.
 Tel: (86) 755-26066440 Fax: (86) 755-26014772 Email: service@anbotek.com



Hotline
 400-003-0500
 www.anbotek.com

IEC 62368-1

Clause	Requirement + Test	Result - Remark	Verdict
	Type test voltage Vini	>4000Vpk	—
	Routine test voltage, Vini,b	>4000Vpk	—
G.13	Printed boards		P
G.13.1	General requirements	(See appended table 4.1.2)	P
G.13.2	Uncoated printed boards		P
G.13.3	Coated printed boards	No coated printed boards used	N/A
G.13.4	Insulation between conductors on the same inner surface		N/A
	Compliance with cemented joint requirements (Specify construction)		—
G.13.5	Insulation between conductors on different surfaces		N/A
	Distance through insulation		N/A
	Number of insulation layers (pcs)		—
G.13.6	Tests on coated printed boards		N/A
G.13.6.1	Sample preparation and preliminary inspection		N/A
G.13.6.2a)	Thermal conditioning		N/A
G.13.6.2b)	Electric strength test		N/A
G.13.6.2c)	Abrasion resistance test		N/A
G.14 *	Coating on components terminals		N/A
G.14.1	Requirements	(See G.13)	N/A
G.15 *	Liquid filled components		N/A
G.15.1	General requirements		N/A
G.15.2	Requirements		N/A
G.15.3	Compliance and test methods		N/A
G.15.3.1	Hydrostatic pressure test		N/A
G.15.3.2	Creep resistance test		N/A
G.15.3.3	Tubing and fittings compatibility test		N/A
G.15.3.4	Vibration test		N/A
G.15.3.5	Thermal cycling test		N/A
G.15.3.6	Force test		N/A
G.15.4	Compliance		N/A
G.16 *	IC including capacitor discharge function (ICX)		N/A
a)	Humidity treatment in accordance with sc 5.4.8 – 120 hours	No such IC used	N/A
b)	Impulse test using circuit 2 with Uc = to transient voltage		N/A

Shenzhen Anbotek Compliance Laboratory Limited

Address: 1/F., Building D, Sogood Science and Technology Park, Sanwei Community, Hangcheng Street, Bao'an District, Shenzhen, Guangdong, China.

Tel: (86) 755-26066440 Fax: (86) 755-26014772 Email: service@anbotek.com



Hotline
400-003-0500
www.anbotek.com

IEC 62368-1

Clause	Requirement + Test	Result - Remark	Verdict
C1)	Application of ac voltage at 110% of rated voltage for 2.5 minutes		N/A
C2)	Test voltage		—
D1)	10,000 cycles on and off using capacitor with smallest capacitance resistor with largest resistance specified by manufacturer		N/A
D2)	Capacitance		—
D3)	Resistance		—


H *	CRITERIA FOR TELEPHONE RINGING SIGNALS		N/A
H.1	General	No telephone ringing signals produce	N/A
H.2	Method A		N/A
H.3	Method B		N/A
H.3.1	Ringing signal		N/A
H.3.1.1	Frequency (Hz)		—
H.3.1.2	Voltage (V)		—
H.3.1.3	Cadence; time (s) and voltage (V)		—
H.3.1.4	Single fault current (mA):.....		—
H.3.2	Tripping device and monitoring voltage		N/A
H.3.2.1	Conditions for use of a tripping device or a monitoring voltage complied with		N/A
H.3.2.2	Tripping device		N/A
H.3.2.3	Monitoring voltage (V)		—

J *	INSULATED WINDING WIRES FOR USE WITHOUT INTERLEAVED INSULATION		P
	General requirements	Approved triple insulated wires complied with Annex U of IEC60950-1 (It can be considered comply with Annex J of this standard)	P

K	SAFETY INTERLOCKS		N/A
K.1	General requirements	No safety interlocks inside the EUT	N/A
K.2	Components of safety interlock safeguard mechanism		N/A
K.3	Inadvertent change of operating mode		N/A
K.4	Interlock safeguard override		N/A

Shenzhen Anbotech Compliance Laboratory Limited

Address: 1/F., Building D, Sogood Science and Technology Park, Sanwei Community, Hangcheng Street, Bao'an District, Shenzhen, Guangdong, China.
 Tel: (86) 755-26066440 Fax: (86) 755-26014772 Email: service@anbotech.com

 Hotline
 400-003-0500
 www.anbotech.com

IEC 62368-1

Clause	Requirement + Test	Result - Remark	Verdict
K.5	Fail-safe		N/A
	Compliance		N/A
K.6	Mechanically operated safety interlocks		N/A
K.6.1	Endurance requirement		N/A
K.6.2	Compliance and Test method		N/A
K.7	Interlock circuit isolation		N/A
K.7.1	Separation distance for contact gaps & interlock circuit elements (type and circuit location)		N/A
K.7.2	Overload test, Current (A)		N/A
K.7.3	Endurance test		N/A
K.7.4	Electric strength test		N/A

L	DISCONNECT DEVICES		P
L.1	General requirements	AC inlet	P
L.2	Permanently connected equipment		N/A
L.3	Parts that remain energized		N/A
L.4	Single phase equipment		P
L.5	Three-phase equipment		N/A
L.6	Switches as disconnect devices		N/A
L.7	Plugs as disconnect devices		P
L.8	Multiple power sources		N/A

M	EQUIPMENT CONTAINING BATTERIES AND THEIR PROTECTION CIRCUITS		P
M.1	General requirements		P
M.2	Safety of batteries and their cells		P
M.2.1	Requirements		P
M.2.2	Compliance and test method (identify method) .. :		P
M.3	Protection circuits		P
M.3.1	Requirements		P
M.3.2	Tests		P
	- Overcharging of a rechargeable battery		P
	- Unintentional charging of a non-rechargeable battery		N/A
	- Reverse charging of a rechargeable battery		P
	- Excessive discharging rate for any battery		P
M.3.3	Compliance		P

Shenzhen Anbotek Compliance Laboratory Limited

Address: 1/F., Building D, Sogood Science and Technology Park, Sanwei Community, Hangcheng Street, Bao'an District, Shenzhen, Guangdong, China.

Tel: (86) 755-26066440 Fax: (86) 755-26014772 Email: service@anbotek.com



Hotline
400-003-0500
www.anbotek.com

IEC 62368-1

Clause	Requirement + Test	Result - Remark	Verdict
M.4	Additional safeguards for equipment containing secondary lithium battery		P
M.4.1	General		P
M.4.2	Charging safeguards		P
M.4.2.1	Charging operating limits		P
M.4.2.2a)	Charging voltage, current and temperature	See table M.4	—
M.4.2.2 b)	Single faults in charging circuitry		—
M.4.3	Fire Enclosure		N/A
M.4.4	Endurance of equipment containing a secondary lithium battery		N/A
M.4.4.2	Preparation		N/A
M.4.4.3	Drop and charge/discharge function tests		N/A
	Drop	1000mm, 3times	N/A
	Charge	Charge function effective	N/A
	Discharge	Discharge function effective	N/A
M.4.4.4	Charge-discharge cycle test	Three complete discharge and charge cycles.	N/A
M.4.4.5	Result of charge-discharge cycle test	Charge/discharge function effective	N/A
M.5	Risk of burn due to short circuit during carrying		N/A
M.5.1	Requirement		N/A
M.5.2	Compliance and Test Method (Test of P.2.3)		N/A
M.6	Prevention of short circuits and protection from other effects of electric current		N/A
M.6.1	Short circuits		N/A
M.6.1.1	General requirements		N/A
M.6.1.2	Test method to simulate an internal fault		N/A
M.6.1.3	Compliance (Specify M.6.1.2 or alternative method)		N/A
M.6.2	Leakage current (mA)		N/A
M.7 *	Risk of explosion from lead acid and NiCd batteries		N/A
M.7.1	Ventilation preventing explosive gas concentration		N/A
M.7.2	Compliance and test method		N/A
M.8 *	Protection against internal ignition from external spark sources of lead acid batteries		N/A
M.8.1	General requirements		N/A

Shenzhen Anbotek Compliance Laboratory Limited

Address: 1/F., Building D, Sogood Science and Technology Park, Sanwei Community, Hangcheng Street, Bao'an District, Shenzhen, Guangdong, China.

Tel: (86) 755-26066440 Fax: (86) 755-26014772 Email: service@anbotek.com



Hotline
400-003-0500
www.anbotek.com

IEC 62368-1

Clause	Requirement + Test	Result - Remark	Verdict
M.8.2	Test method		N/A
M.8.2.1	General requirements		N/A
M.8.2.2	Estimation of hypothetical volume V_z (m ³ /s)..... :		—
M.8.2.3	Correction factors..... :		—
M.8.2.4	Calculation of distance d (mm) :		—
M.9	Preventing electrolyte spillage		N/A
M.9.1	Protection from electrolyte spillage		N/A
M.9.2	Tray for preventing electrolyte spillage		N/A
M.10	Instructions to prevent reasonably foreseeable misuse (Determination of compliance: inspection, data review; or abnormal testing) :		P

N	ELECTROCHEMICAL POTENTIALS		N/A
	Metal(s) used :		—

O	MEASUREMENT OF CREEPAGE DISTANCES AND CLEARANCES		P
	Figures O.1 to O.20 of this Annex applied :	Considered	—

P	SAFEGUARDS AGAINST ENTRY OF FOREIGN OBJECTS AND SPILLAGE OF INTERNAL LIQUIDS		P
P.1	General requirements		P
P.2.2	Safeguards against entry of foreign object		P
	Location and Dimensions (mm) :	Side opening, 0.98mm	—
P.2.3	Safeguard against the consequences of entry of foreign object		P
P.2.3.1	Safeguards against the entry of a foreign object		P
	Openings in transportable equipment		P
	Transportable equipment with metalized plastic parts :		
P.2.3.2	Openings in transportable equipment in relation to metallized parts of a barrier or enclosure (identification of supplementary safeguard) :		N/A
P.3 *	Safeguards against spillage of internal liquids		N/A
P.3.1	General requirements		N/A
P.3.2	Determination of spillage consequences		N/A
P.3.3	Spillage safeguards		N/A
P.3.4	Safeguards effectiveness		N/A

Shenzhen Anbotek Compliance Laboratory Limited

Address: 1/F., Building D, Sogood Science and Technology Park, Sanwei Community, Hangcheng Street, Bao'an District, Shenzhen, Guangdong, China.
 Tel: (86) 755-26066440 Fax: (86) 755-26014772 Email: service@anbotek.com

Hotline
 400-003-0500
 www.anbotek.com

IEC 62368-1

Clause	Requirement + Test	Result - Remark	Verdict
P.4 *	Metallized coatings and adhesive securing parts		N/A
P.4.2 a)	Conditioning testing		N/A
	Tc (°C)..... :		—
	Tr (°C) :		—
	Ta (°C)..... :		—
P.4.2 b)	Abrasion testing		N/A
P.4.2 c)	Mechanical strength testing		N/A


Q	CIRCUITS INTENDED FOR INTERCONNECTION WITH BUILDING WIRING		P
Q.1	Limited power sources	For output terminal (see Table Q.1)	P
Q.1.1 a)	Inherently limited output		N/A
Q.1.1 b)	Impedance limited output		N/A
	- Regulating network limited output under normal operating and simulated single fault condition		N/A
Q.1.1 c)	Overcurrent protective device limited output		N/A
Q.1.1 d)	IC current limiter complying with G.9		N/A
Q.1.2	Compliance and test method	(See appended table Annex Q.1)	P
Q.2	Test for external circuits – paired conductor cable		N/A
	Maximum output current (A)		—
	Current limiting method..... :		—

R *	LIMITED SHORT CIRCUIT TEST		N/A
R.1	General requirements		N/A
R.2	Determination of the overcurrent protective device and circuit		N/A
R.3	Test method Supply voltage (V) and short-circuit current (A)).		N/A

S	TESTS FOR RESISTANCE TO HEAT AND FIRE		N/A
S.1	Flammability test for fire enclosures and fire barrier materials of equipment where the steady state power does not exceed 4 000 W		N/A
	Samples, material		—
	Wall thickness (mm)..... :		—
	Conditioning (°C)..... :		—

Shenzhen Anbotek Compliance Laboratory Limited

Address: 1/F., Building D, Sogood Science and Technology Park, Sanwei Community, Hangcheng Street, Bao'an District, Shenzhen, Guangdong, China.
 Tel: (86) 755-26066440 Fax: (86) 755-26014772 Email: service@anbotek.com

 Hotline
 400-003-0500
 www.anbotek.com

IEC 62368-1

Clause	Requirement + Test	Result - Remark	Verdict
	Test flame according to IEC 60695-11-5 with conditions as set out		N/A
	- Material not consumed completely		N/A
	- Material extinguishes within 30s		N/A
	- No burning of layer or wrapping tissue		N/A
S.2	Flammability test for fire enclosure and fire barrier integrity		N/A
	Samples, material		—
	Wall thickness (mm)		—
	Conditioning (°C)		—
	Test flame according to IEC 60695-11-5 with conditions as set out		N/A
	Test specimen does not show any additional hole		N/A
S.3 *	Flammability test for the bottom of a fire enclosure		N/A
	Samples, material		—
	Wall thickness (mm)		—
	Cheesecloth did not ignite		N/A
S.4	Flammability classification of materials		N/A
S.5	Flammability test for fire enclosure materials of equipment with a steady-state power exceeding 4000 W		N/A
	Samples, material		—
	Wall thickness (mm)		—
	Conditioning (test condition), (°C)		—
	Test flame according to IEC 60695-11-20 with conditions as set out		N/A
	After every test specimen was not consumed completely		N/A
	After fifth flame application, flame extinguished within 1 min		N/A

T	MECHANICAL STRENGTH TESTS		P
T.1	General requirements		P
T.2	Steady force test, 10 N	(See appended table T.2)	P
T.3	Steady force test, 30 N		N/A
T.4	Steady force test, 100 N	(See appended table T.4)	P
T.5	Steady force test, 250 N		N/A

Shenzhen Anbotek Compliance Laboratory Limited

Address: 1/F., Building D, Sogood Science and Technology Park, Sanwei Community, Hangcheng Street, Bao'an District, Shenzhen, Guangdong, China.

Tel: (86) 755-26066440 Fax: (86) 755-26014772 Email: service@anbotek.com



Hotline
400-003-0500
www.anbotek.com

IEC 62368-1

Clause	Requirement + Test	Result - Remark	Verdict
T.6	Enclosure impact test		N/A
	Fall test		N/A
	Swing test		N/A
T.7	Drop test	(See appended table T.7) Enclosure material: see table 4.1.2	P
T.8	Stress relief test	(See appended table T.8)	P
T.9	Impact Test (glass)	No glass used	N/A
T.9.1	General requirements		N/A
T.9.2	Impact test and compliance		N/A
	Impact energy (J)		—
	Height (m)		—
T.10	Glass fragmentation test		N/A
T.11	Test for telescoping or rod antennas		N/A
	Torque value (Nm)		—

U *	MECHANICAL STRENGTH OF CATHODE RAY TUBES (CRT) AND PROTECTION AGAINST THE EFFECTS OF IMPLOSION		N/A
U.1	General requirements	No CRTs	N/A
U.2	Compliance and test method for non-intrinsically protected CRTs		N/A
U.3	Protective Screen.....		N/A

V	DETERMINATION OF ACCESSIBLE PARTS (FINGERS, PROBES AND WEDGES)		P
V.1	Accessible parts of equipment		P
V.2	Accessible part criterion		P

IEC 62368-1

Clause	Requirement + Test	Result - Remark	Verdict
--------	--------------------	-----------------	---------

4.1.2	TABLE: List of critical components					P
Object / part No.	Manufacturer/ trademark	Type / model	Technical data	Standard	Mark(s) of conformity ¹	
Plastic enclosure	POLYPLASTICS CO LTD	E130i(dd)(e)(f1)	V-0, 220°C, min.0.75 mm thickness	UL 94	UL E106764	
PCB	XIN MAN DA CIRCUIT (SHENZHEN) CO LTD	2,1A	V-0, 130°C	UL 796	UL E308011	
(Alternative)	Interchangeable	Interchangeable	V-0, 130°C	UL 796	UL	
Socket	Dongguan Huaconn Electronics Co Ltd	HC-99	250Vac, 15A, 115 °C	UL 498	UL E340249	
Socket	HXH	AS-1P	250Vac, 15A, 115 °C	UL 498	UL	
Battery pack	EcoFlow Inc	MR310-BMS	40000mAh,58.4V,1 4S16P	IEC62133- 2:2017	Report No:4379971.5 0	
Cells in above battery pack	GUANGZHOU GREAT POWER ENERGY&TECHN OLOGY CO LTD	INR18650- 2500mAh 3.6V	3.6V,2500mAh	UL 1642	UL MH27311	
DC FAN (4PCS)	SHENZHEN HUAXIA HENGTAI ELECTRONIC CO LTD	DA06020B12UR	12VDC,0.25A	UL 507	UL E254715	
Internal wire	Dongguan Zelongkang Wire Co., Ltd	1015	105 °C,600V, 16AWG	UL 758	UL E330488	
(Alternative)	Interchangeable	Interchangeable	105 °C,600V, 16AWG	UL 758	UL E330488	
Fuse (F1)(On PSDR bord)	SHENZHEN VICTORS INDUSTRIAL CO LTD	VF215-P	12A,250Vac	UL 248-1, UL 248-14	UL E357828	
Fuse(F2) (On BMS bord)	DONGGUAN BETTER ELECTRONICS TECHNOLOGY CO LTD	BJK60-010	0.1A, 60VDC	UL 248-1, UL 248-14	UL E345393	
Fuse(F4) (On BMS bord)	ADVANCED SURGETECH MATERIALS LTD	A121001-100	100A, 100VDC	UL 248-1, UL 248-14	UL E470032	
Fuse(F1,F4,F5, F6) (On PD bord)	ADVANCED SURGETECH MATERIALS LTD	12 110.3	3A, 72VDC	UL 248-1, UL 248-14	UL E355868	

Shenzhen Anbotek Compliance Laboratory Limited

Address: 1/F., Building D, Sogood Science and Technology Park, Sanwei Community,
Hangcheng Street, Bao'an District, Shenzhen, Guangdong, China.

Tel: (86) 755-26066440 Fax: (86) 755-26014772 Email: service@anbotek.com



Hotline

400-003-0500

www.anbotek.com

IEC 62368-1

Clause	Requirement + Test			Result - Remark	Verdict
(Alternative)	DONGGUAN BETTER ELECTRONICS TECHNOLOGY CO LTD	123	3A, 63VDC	UL 248-1, UL 248-14	UL E300003
Fuse(F2,F3) (On PD bord)	ADVANCED SURGETECH MATERIALS LTD	12 111.8	8A, 48VDC	UL 248-1, UL 248-14	UL E355868
(Alternative)	DONGGUAN BETTER ELECTRONICS TECHNOLOGY CO LTD	127	8A, 48VDC	UL 248-1, UL 248-14	UL E300003
Fuse(F1,F5,F7) (On MPPT bord)	ADVANCED SURGETECH MATERIALS LTD	12 111.5	5A, 72VDC	UL 248-1, UL 248-14	UL E355868
Fuse(F2,F3,F4) (On MPPT bord)	ADVANCED SURGETECH MATERIALS LTD	PB05.15	15A, 125VDC	UL 248-1, UL 248-14	UL E355868
Fuse(F7) (On BMS bord)	ADVANCED SURGETECH MATERIALS LTD	12 110.3	3A, 72VDC	UL 248-1, UL 248-14	UL E355868
Fuse(F8,F9) (On BMS bord)	ADVANCED SURGETECH MATERIALS LTD	12 110.1	1A, 72VDC	UL 248-1, UL 248-14	UL E355868
Heat shrinkable tube	Interchangeable	Interchangeable	VW-1, min. 300V, min. 125°C	UL 224	UL
Teflon tube	Interchangeable	Interchangeable	VW-1, min. 300V, min. 200°C	UL 224	UL
Thermistor (RT1,RT2)	SHENZHENSHI KEMIN SENSOR CO LTD	MF5210K	10Kohm at 25°C, Tmoa:120°C, Class C4	UL 1434	UL E356449
Varistor (RV1) (Optional)	SHANTOU HIGH-NEW TECHNOLOGY DEVELOPMNT ZONE SONGTIAN ENTERPRISE CO LTD	20D471K	320VAC, min. V-1, 125°C	IEC/EN 61051-1, IEC/EN 61051-2, UL 1449	UL E330837 VDE 40023049
X-capacitor (C4, C5) (Optional)	DONG GUAN HONGFARAD ELECTRONICS CO LTD	HMKP	Min. 250Vac, max. 1.0µF±20%, 110°C, type X2	IEC/EN/UL 60384-14	UL E484578 VDE 40044173
Y-capacitor (CY1,CY2,CY3, CY4) (Optional)	DONGGUAN CIGU ELECTRONIC TECHNOLOGY CO LTD	CE	Max. 10nF, min. 250Vac, 125°C, Y2 type	IEC/EN/UL 60384-14	UL E481614

Shenzhen Anbotek Compliance Laboratory Limited

Address: 1/F., Building D, Sogood Science and Technology Park, Sanwei Community, Hangcheng Street, Bao'an District, Shenzhen, Guangdong, China.

Tel: (86) 755-26066440 Fax: (86) 755-26014772 Email: service@anbotek.com



Hotline

400-003-0500

www.anbotek.com

IEC 62368-1

Clause	Requirement + Test		Result - Remark		Verdict
Y-capacitor (C19,C118,C127 ,C128,C142) (Optional)	DONGGUAN CIGU ELECTRONIC TECHNOLOGY CO LTD	CD	Max. 2200pF, min. 250Vac, 125°C, Y1 type	IEC/EN/UL 60384-14	UL E481614
Relay (RY1,RY2)	SONG CHUAN PRECISION CO LTD	210H-2AH-F-C	Min. 250Vac, min. 16A, min. 85°C	IEC/EN 61810- 1:2015 UL 508	UL E88991 TUV R 50384861
Relay (RY1)	DONGGUAN CHUROD ELECTRONICS CO LTD	A1-S-112HA2	Min. 250Vac, min. 10A, min. 85°C	IEC/EN 61810- 1:2015 UL 508	UL E341422 TUV AK 50379382
Optocoupler (U11,U13)	EVERLIGHT ELECTRONICS CO LTD	EL816, EL817	Reinforced insulation, Dti ≥ 0.4mm, 110°C	IEC/EN 60950- 1, IEC/EN 60747- 5-5, UL 1577	UL E214129 VDE 132249
Transformer (T1) (On BMS bord)	DONGGUAN ZHENGMAO ELECTRONICS CO LTD	ZM-21018A	Class B, 130°C	Applicable part of IEC/EN 62368-1	Tested with appliance
-Triple insulation wire	FURUKAWA ELECTRIC CO LTD	TEX,TEX-E	Class B, 130°C	IEC/EN 62368, UL 2353	UL E206440
-Bobbin	SUMITOMO BAKELITE CO LTD	PM-9820	Phenolic, min. 0.51 mm thickness, rated min. V-0, 150°C.	UL 94, UL 746C	UL E41429
-Insulation tape	JINGJIANG YAHUA PRESSURE SENSITIVE GLUE CO LTD	PF* (d)(g)	Rated 130°C	UL 510 A	UL E165111
-Teflon tube	GREAT HOLDING INDUSTRIAL CO LTD	TFT, TFS	Rated min. 200°C, min. 300 V, VW-1.	UL 224	UL E156256
-Varnish	John C Dolph Co	BC-346A	130°C	UL 1446	UL E317427
Transformer (T1) (On MPPT bord)	DONGGUAN ZHENGMAO ELECTRONICS CO LTD	ZM-20200A	Class B, 130°C	Applicable part of IEC/EN 62368-1	Tested with appliance
-Triple insulation wire	FURUKAWA ELECTRIC CO LTD	TEX,TEX-E	Class B, 130°C	IEC/EN 62368, UL 2353	UL E206440
-Bobbin	SUMITOMO BAKELITE CO LTD	PM-9820	Phenolic, min. 0.51 mm thickness, rated min. V-0, 150°C.	UL 94, UL 746C	UL E41429

Shenzhen Anbotek Compliance Laboratory Limited

Address: 1/F., Building D, Sogood Science and Technology Park, Sanwei Community,
Hangcheng Street, Bao'an District, Shenzhen, Guangdong, China.

Tel: (86) 755-26066440 Fax: (86) 755-26014772 Email: service@anbotek.com



Hotline

400-003-0500

www.anbotek.com

IEC 62368-1

Clause	Requirement + Test		Result - Remark		Verdict
-Insulation tape	JINGJIANG YAHUA PRESSURE SENSITIVE GLUE CO LTD	PF* (d)(g)	Rated 130°C	UL 510 A	UL E165111
-Teflon tube	GREAT HOLDING INDUSTRIAL CO LTD	TFT, TFS	Rated min. 200°C, min. 300 V, VW-1.	UL 224	UL E156256
-Varnish	John C Dolph Co	BC-346A	130°C	UL 1446	UL E317427
Transformer (T1) (On PSDR bord)	DONGGUAN ZHENGMAO ELECTRONICS CO LTD	ZM-19048A	Class B, 130°C	Applicable part of IEC/EN 62368-1	Tested with appliance
-Triple insulation wire	FURUKAWA ELECTRIC CO LTD	TEX,TEX-E	Class B, 130°C	IEC/EN 62368, UL 2353	UL E206440
-Bobbin	SUMITOMO BAKELITE CO LTD	PM-9820	Phenolic, min. 0.51 mm thickness, rated min. V-0, 150°C.	UL 94, UL 746C	UL E41429
-Insulation tape	JINGJIANG YAHUA PRESSURE SENSITIVE GLUE CO LTD	PF* (d)(g)	Rated 130°C	UL 510 A	UL E165111
-Teflon tube	GREAT HOLDING INDUSTRIAL CO LTD	TFT, TFS	Rated min. 200°C, min. 300 V, VW-1.	UL 224	UL E156256
-Varnish	John C Dolph Co	BC-346A	130°C	UL 1446	UL E317427
Transformer (T2) (On PSDR bord)	DONGGUAN ZHENGMAO ELECTRONICS CO LTD	ZM-19051A	Class B, 130°C	Applicable part of IEC/EN 62368-1	Tested with appliance
-Triple insulation wire	FURUKAWA ELECTRIC CO LTD	TEX,TEX-E	Class B, 130°C	IEC/EN 62368, UL 2353	UL E206440
-Bobbin	SUMITOMO BAKELITE CO LTD	PM-9820	Phenolic, min. 0.51 mm thickness, rated min. V-0, 150°C.	UL 94, UL 746C	UL E41429
-Insulation tape	JINGJIANG YAHUA PRESSURE SENSITIVE GLUE CO LTD	PF* (d)(g)	Rated 130°C	UL 510 A	UL E165111
-Teflon tube	GREAT HOLDING INDUSTRIAL CO LTD	TFT, TFS	Rated min. 200°C, min. 300 V, VW-1.	UL 224	UL E156256
-Varnish	John C Dolph Co	BC-346A	130°C	UL 1446	UL E317427

Shenzhen Anbotech Compliance Laboratory Limited

Address: 1/F., Building D, Sogood Science and Technology Park, Sanwei Community,
Hangcheng Street, Bao'an District, Shenzhen, Guangdong, China.

Tel: (86) 755-26066440 Fax: (86) 755-26014772 Email: service@anbotech.com



Hotline
400-003-0500
www.anbotech.com

IEC 62368-1

Clause	Requirement + Test		Result - Remark		Verdict
Transformer (T3) (On PSDR bord)	DONGGUAN ZHENGMAO ELECTRONICS CO LTD	ZM-21067A	Class B, 130°C	Applicable part of IEC/EN 62368-1	Tested with appliance
-Triple insulation wire	FURUKAWA ELECTRIC CO LTD	TEX,TEX-E	Class B, 130°C	IEC/EN 62368, UL 2353	UL E206440
-Bobbin	SUMITOMO BAKELITE CO LTD	PM-9820	Phenolic, min. 0.51 mm thickness, rated min. V-0, 150°C.	UL 94, UL 746C	UL E41429
-Insulation tape	JINGJIANG YAHUA PRESSURE SENSITIVE GLUE CO LTD	PF* (d)(g)	Rated 130°C	UL 510 A	UL E165111
-Teflon tube	GREAT HOLDING INDUSTRIAL CO LTD	TFT, TFS	Rated min. 200°C, min. 300 V, VW-1.	UL 224	UL E156256
-Varnish	John C Dolph Co	BC-346A	130°C	UL 1446	UL E317427
(Alternative)	DONGGUAN ZHENGMAO ELECTRONICS CO LTD	ZM-21010A	Class B, 130°C	Applicable part of IEC/EN 62368-1	Tested with appliance
Inductor(L1) (On MPPT bord)	DONGGUAN ZHENGMAO ELECTRONICS CO LTD	ZM-21032B	50 μ H \pm 10%, 130°C	IEC/EN 62368- 1	Tested with appliance
Inductor(L1)(On BMS bord)	MAOXING	WBH124-101M-R	100 μ H \pm 20%, 130°C	IEC/EN 62368- 1	Tested with appliance
Inductor(L2) (On MPPT bord)	Shenzhen Jiahong Yongtai Electronics Co., Ltd.	LB23H00125	23 μ H \pm 10%, 130°C	IEC/EN 62368- 1	Tested with appliance
Inductor(L2) (On PSDR bord)	DONGGUAN ZHENGMAO ELECTRONICS CO LTD	ZM-20045B	2.7mH \pm 10%, 130°C	IEC/EN 62368- 1	Tested with appliance
Inductor(L3,L4) (On PSDR bord)	DONGGUAN ZHENGMAO ELECTRONICS CO LTD	ZM-20085B	1.69mH \pm 10%, 130°C	IEC/EN 62368- 1	Tested with appliance
Inductor(L3,L4) (On PD bord)	XINCHANG	MCS1050- 220MT1	22 μ H \pm 10%, 130°C	IEC/EN 62368- 1	Tested with appliance
(Alternative)	MAOXING	MS1005C-220M-R	15 μ H \pm 20%, 130°C	IEC/EN 62368- 1	Tested with appliance

Shenzhen Anbotek Compliance Laboratory Limited

Address: 1/F., Building D, Sogood Science and Technology Park, Sanwei Community,
Hangcheng Street, Bao'an District, Shenzhen, Guangdong, China.

Tel: (86) 755-26066440 Fax: (86) 755-26014772 Email: service@anbotek.com



Hotline
400-003-0500
www.anbotek.com

IEC 62368-1

Clause	Requirement + Test		Result - Remark		Verdict
Inductor(L1,L2) (On PD bord)	MAOXING	MS1306CR-150M-R	15 μ H \pm 20%, 130°C	IEC/EN 62368-1	Tested with appliance
Inductor(L5) (On PS DR bord)	DONGGUAN ZHENGMAO ELECTRONICS CO LTD	ZM-21077A	65 μ H \pm 10%, 130°C	IEC/EN 62368-1	Tested with appliance
(Alternative)	DONGGUAN ZHENGMAO ELECTRONICS CO LTD	ZM-20185A	65 μ H \pm 10%, 130°C	IEC/EN 62368-1	Tested with appliance
Inductor(L7,L8) (On PD bord)	XINCHANG	MCS1050-330MT1	33 μ H \pm 10%, 130°C	IEC/EN 62368-1	Tested with appliance
(Alternative)	MAOXING	MS1005C-330M-R	33 μ H \pm 10%, 130°C	IEC/EN 62368-1	Tested with appliance
Inductor(L8) (On MPPT bord)	MAOXING	MS1707C-150M-RA	15 μ H \pm 10%, 130°C	IEC/EN 62368-1	Tested with appliance
Current Transformer (CT2)	Shenzhen Jiahong Yongtai Electronics Co., Ltd.	SL28E0002	130°C	IEC/EN 62368-1	Tested with appliance
-Magnet wire	NINGBO JINTIAN NEW MATERIAL CO LTD	xUEW/155, QA-x/155	155°C	UL 2353	UL E227047
-Bobbin	DUPONT SPECIALTY PRODUCTS USA, LLC	410	Phenolic, min. 0.51 mm thickness, rated min. V-0, 150°C.	UL 94, UL 746C	UL E34739
-Insulation tape	JINGJIANG YAHUA PRESSURE SENSITIVE GLUE CO LTD	PF* (d)(g)	Rated 130°C	UL 510 A	UL E165111
Current Transformer (CT4)	Shenzhen Jiahong Yongtai Electronics Co., Ltd.	SL19E0006	130°C	IEC/EN 62368-1	Tested with appliance
(Alternative)	Shenzhen Jiahong Yongtai Electronics Co., Ltd.	SL19E0003	130°C	IEC/EN 62368-1	Tested with appliance
-Magnet wire	NINGBO JINTIAN NEW MATERIAL CO LTD	xUEW/155, QA-x/155	155°C	UL 2353	UL E227047
-Bobbin	DUPONT SPECIALTY PRODUCTS USA, LLC	410	Phenolic, min. 0.51 mm thickness, rated min. V-0, 150°C.	UL 94, UL 746C	UL E34739

Shenzhen Anbotek Compliance Laboratory Limited

Address: 1/F., Building D, Sogood Science and Technology Park, Sanwei Community, Hangcheng Street, Bao'an District, Shenzhen, Guangdong, China.

Tel: (86) 755-26066440 Fax: (86) 755-26014772 Email: service@anbotek.com



Hotline

400-003-0500

www.anbotek.com

IEC 62368-1

Clause	Requirement + Test		Result - Remark		Verdict
-Insulation tape	JINGJIANG YAHUA PRESSURE SENSITIVE GLUE CO LTD	PF* (d)(g)	Rated 130°C	UL 510 A	UL E165111
Heatsink(HS1,H S2,HS3)	Interchangeable	Interchangeable	Metal, overall dimension: 91*21*45mm	IEC/EN62368-1	Tested with appliance
Supplementary information: 1) Provided evidence ensures the agreed level of compliance. See OD-CB2039.					

4.8.4, 4.8.5	TABLE: Lithium coin/button cell batteries mechanical tests			N/A
(The following mechanical tests are conducted in the sequence noted.)				
4.8.4.2	TABLE: Stress Relief test			—
Part		Material	Oven Temperature (°C)	Comments
--		--	--	--
4.8.4.3	TABLE: Battery replacement test			—
Battery part no.:		--	—	
Battery Installation/withdrawal		Battery Installation/Removal Cycle		Comments
--		1		--
		2		--
		3		--
		4		--
		5		--
		6		--
		7		--
		8		--
		9		--
4.8.4.4	TABLE: Drop test			—
Impact Area		Drop Distance	Drop No.	Observations
--		--	--	--
4.8.4.5	TABLE: Impact			—
Impacts per surface		Surface tested	Impact energy (Nm)	Comments
--		--	--	--
4.8.4.6	TABLE: Crush test			—

Shenzhen Anbotek Compliance Laboratory Limited

Address: 1/F., Building D, Sogood Science and Technology Park, Sanwei Community,
Hangcheng Street, Bao'an District, Shenzhen, Guangdong, China.
Tel: (86) 755-26066440 Fax: (86) 755-26014772 Email: service@anbotek.com



Hotline
400-003-0500
www.anbotek.com

IEC 62368-1

Clause	Requirement + Test	Result - Remark	Verdict
--------	--------------------	-----------------	---------

Test position	Surface tested	Crushing Force (N)	Duration force applied (s)
--	--	--	--
Supplementary information:			

4.8.5	TABLE: Lithium coin/button cell batteries mechanical test result			N/A
Test position		Surface tested	Force (N)	Duration force applied (s)
--		--	--	--
Supplementary information:				

5.2	Table: Classification of electrical energy sources						P
5.2.2.2 – Steady State Voltage and Current conditions							
No.	Supply Voltage	Location (e.g. circuit designation)	Test conditions	Parameters			ES Class
				U (Vrms or Vpk)	I (Apk or Arms)	Hz	
1	264VAC, 60Hz	Primary circuits	Normal: --	--	--	--	ES3 (declared)
			Abnormal: --	--	--	--	
			Single fault: --	--	--	--	
Supplementary information:							
- SC - Short-circuited; OC - Open-circuited.							

5.2.2.3 - Capacitance Limits						
No.	Supply Voltage	Location (e.g. circuit designation)	Test conditions	Parameters		ES Class
				Capacitance, nF	Upk (V)	
--	--	--	Normal	--	--	--
			Abnormal	--	--	
			Single fault – SC/OC	--	--	

5.2.2.4 - Single Pulses							
No.	Supply Voltage	Location (e.g. circuit designation)	Test conditions	Parameters			ES Class
				Duration (ms)	Upk (V)	Ipk (mA)	
--	--	--	Normal	--	--	--	--
			Abnormal	--	--	--	

Shenzhen Anbotek Compliance Laboratory Limited

Address: 1/F., Building D, Sogood Science and Technology Park, Sanwei Community, Hangcheng Street, Bao'an District, Shenzhen, Guangdong, China.

Tel: (86) 755-26066440 Fax: (86) 755-26014772 Email: service@anbotek.com



Hotline
400-003-0500
www.anbotek.com

IEC 62368-1

Clause	Requirement + Test	Result - Remark	Verdict
--------	--------------------	-----------------	---------

		Single fault – SC/OC	--	--	--	
--	--	----------------------	----	----	----	--

5.2.2.5 - Repetitive Pulses

No.	Supply Voltage	Location (e.g. circuit designation)	Test conditions	Parameters			ES Class
				Off time (ms)	Upk (V)	Ipk (mA)	
--	--	--	Normal	--	--	--	--
			Abnormal	--	--	--	
			Single fault – SC/OC	--	--	--	

Test Conditions:

Normal –

Abnormal -

Supplementary information: SC=Short Circuit, OC=Short Circuit

5.4.1.4, 6.3.2, 9.0, B.2.6	TABLE: Temperature measurements					P
	Supply voltage (V)	198V/60Hz		264V/50Hz		—
	Ambient T _{min} (°C)	--	--	--	--	—
	Ambient T _{max} (°C)	--	--	--	--	—
	T _{ma} (°C)	45.0				—
Maximum measured temperature T of part/at:		T (°C)				Allowed T _{max} (°C)
Inside wire		61.4		59.7		105
PCB near DB1		88.6		86.5		130
X-Cap. C3		90.2		88.4		105
PCB near Q23		91.5		89.0		130
E-Cap. C35		72.8		70.5		105
T3 winding		88.6		86.9		110
T3 core		82.5		81.0		110
T2 winding		83.4		81.2		110
T2 core		78.7		76.8		110
T1 winding		84.3		82.1		110
T1 core		80.9		78.6		110
L8 winding		72.6		70.4		130
L7 winding		70.9		68.9		130
L5 winding		75.2		73.2		130

Shenzhen Anbotek Compliance Laboratory Limited

Address: 1/F., Building D, Sogood Science and Technology Park, Sanwei Community, Hangcheng Street, Bao'an District, Shenzhen, Guangdong, China.

Tel: (86) 755-26066440 Fax: (86) 755-26014772 Email: service@anbotek.com



Hotline

400-003-0500

www.anbotek.com

IEC 62368-1

IEC 62368-1							
Clause	Requirement + Test			Result - Remark		Verdict	
L4 winding	73.1			71.8		130	
L3 winding	74.8			72.5		130	
L2 winding	71.3			69.3		130	
L1 winding	75.6			73.7		130	
Battery surface	58.6			56.8		Ref.	
Battery wire	51.2			50.1		Ref.	
Enclosure inside near above T1 and T3	65.1			64.6		Ref.	
Ambient	45.0			45.0		--	
Accessible parts							
Enclosure outside near above T1 and T3	42.3			41.6		77*	
Button surface	38.7			37.2		77*	
Ambient	25.0			25.0		--	
Supplementary information:							
- The maximum operating temperature is 45°C.							
- * means that surfaces touched occasionally for very short periods (> 1 s and < 10 s).							
Temperature T of winding:	t ₁ (°C)	R ₁ (Ω)	t ₂ (°C)	R ₂ (Ω)	T (°C)	Allowed T _{max} (°C)	Insulation class
--	--	--	--	--	--	--	--
Supplementary information:							

5.4.1.10.2	TABLE: Vicat softening temperature of thermoplastics	N/A
Penetration (mm).....	--	—
Object/ Part No./Material	Manufacturer/t rademark	T softening (°C)
--	--	--
supplementary information:		

5.4.1.10.3	TABLE: Ball pressure test of thermoplastics			N/A
Allowed impression diameter (mm)			≤ 2 mm	—
Object/Part No./Material	Manufacturer/trademark	Test temperature (°C)	Impression diameter (mm)	
--	--	--	--	
Supplementary information: --				

5.4.2.2, 5.4.2.4 and 5.4.3	TABLE: Minimum Clearances/Creepage distance	P
-----------------------------------	--	----------

IEC 62368-1

Clause	Requirement + Test			Result - Remark			Verdict
Clearance (cl) and creepage distance (cr) at/of/between:	Up (V)	U r.m.s. (V)	Frequency (kHz)	Required cl (mm)	cl (mm)	Required cr (mm)	cr (mm)
Primary trace to secondary trace under T1 (RI)	577	248	67.4K	2.54	5.2	5.0	5.2
Primary trace to secondary trace under T2 (RI)	563	246	65.3K	2.54	5.2	5.0	5.2
T1 primary windings/ Core to secondary pins (RI)	577	248	67.4K	2.54	9.2	5.0	9.2
T2 primary windings/ Core to secondary pins (RI)	563	246	65.3K	2.54	8.9	5.0	8.9
T3 primary windings/ Core to secondary pins (RI)	575	247	66.8K	2.54	9.1	5.0	9.1
Primary parts and accessible enclosure	340	240	0.06	2.54	7.0	4.8	7.0
Across CY1	344	240	33.6	2.54	5.0	4.8	5.0
Supplementary information: Note 1: Only for frequency above 30 kHz; Note 2: See table 5.4.2.4 if this is based on electric strength test; Note 3: Provide Material Group IIIa/IIIb; Note 4: BI: basic insulation; SI: supplementary insulation; DI: double insulation; RI: reinforced insulation; Note 5: Ferrite core of transformer T1,T2 considered as primary live part; Note 6: If no specified, the worst conditions were recorded; Note 7: Clearance was evaluated for altitude up to 2000m above sea level, correction factor for clearance is 1.0.							

5.4.2.3	TABLE: Minimum Clearances distances using required withstand voltage			P
	Overvoltage Category (OV):			II
	Pollution Degree:			II
Clearance distanced between:		Required withstand voltage	Required cl (mm)	Measured cl (mm)
Same as the “TABLE: Minimum Clearances/Creepage distance”		2500Vpeak	2.3(for BI) 4.5 (for RI)	Same as the “TABLE: Minimum Clearances/Creepage distance”
Note 1: FI: Functional insulation; BI: basic insulation; SI: supplementary insulation; DI: double insulation; RI: reinforced insulation.				
Note 2: Unit was evaluated for altitude up to 5000m above sea level correction factor for clearance is 1.0.				
Note 3: Core of transformer T01 is deeming as primary conductor.				
Note 4: If no specified, the worst condition were recorded.				

Shenzhen Anbotek Compliance Laboratory Limited

Address: 1/F., Building D, Sogood Science and Technology Park, Sanwei Community, Hangcheng Street, Bao'an District, Shenzhen, Guangdong, China.

Tel: (86) 755-26066440 Fax: (86) 755-26014772 Email: service@anbotek.com



Hotline
400-003-0500
www.anbotek.com

IEC 62368-1

Clause	Requirement + Test	Result - Remark	Verdict
--------	--------------------	-----------------	---------

5.4.2.4	TABLE: Clearances based on electric strength test			N/A
Test voltage applied between:		Required cl (mm)	Test voltage (Kv) peak/ r.m.s. / d.c.	Breakdown Yes / No
--		--	--	--
Supplementary information: Not used the alternative method to determine the clearances.				

5.4.4.2, 5.4.4.5 c) 5.4.4.9	TABLE: Distance through insulation measurements					P
Distance through insulation di at/of:		Peak voltage (V)	Frequency (Hz)	Material	Required DTI (mm)	DTI (mm)
Enclosure		340	60	Plastics	0.4	Min. 1.5
Bobbin of T1*		577	67.4K	Phenolic	0.4	Min. 0.75
Bobbin of T2*		563	65.3K	Phenolic	0.4	Min. 0.75
Bobbin of T3*		573	66.2K	Phenolic	0.4	Min. 0.75
Supplementary information:						
* The bobbin of T1,T2 T3 is used as reforced insulation where working voltage exceeds ES2 voltage limitation.						

5.4.9	TABLE: Electric strength tests			P
Test voltage applied between:		Voltage shape (AC, DC)	Test voltage (V)	Breakdown Yes / No
Functional:				
--		--	--	--
Basic/supplementary:				
--		--	--	--
Reinforced:				
L/N to accessible enclosure with metal foil		DC	4000	No
L/N to USB output terminal		DC	4000	No
L/N to USB-C1 output terminal		DC	4000	No
L/N to USB-C2 output terminal		DC	4000	No
L/N to DC output terminal		DC	4000	No
T1: primary to secondary		DC	4000	No
T1: core to secondary		DC	4000	No
T1: one layer of insulation tape #		DC	4000	No
T2: primary to secondary		DC	4000	No

Shenzhen Anbotek Compliance Laboratory Limited

Address: 1/F., Building D, Sogood Science and Technology Park, Sanwei Community, Hangcheng Street, Bao'an District, Shenzhen, Guangdong, China.

Tel: (86) 755-26066440 Fax: (86) 755-26014772 Email: service@anbotek.com



Hotline

400-003-0500

www.anbotek.com

IEC 62368-1

Clause	Requirement + Test	Result - Remark	Verdict
T2: core to secondary	DC	4000	No
T2: one layer of insulation tape #	DC	4000	No
T3: primary to secondary	DC	4000	No
T3: core to secondary	DC	4000	No
T3: one layer of insulation tape #	DC	4000	No
Routine Tests:			
--	--	--	--
Supplementary information: # means all materials listed in table 4.1.2 are considered.			

5.5.2.2	TABLE: Stored discharge on capacitors					P
Supply Voltage (V), Hz	Test Location	Operating Condition (N, S)	Switch position On or off	Measured Voltage (after 2 seconds)	ES Classification	
264V/60Hz	Phase to Neutral	N	--	0V	ES1	
264V/60Hz	Phase to Neutral	S: R26 opened	--	8V	ES1	

Supplementary information:

X-capacitors installed for testing are: CX1=0.1uF

☒ bleeding resistor rating: R18=R19=R26=R27=4.7M ohm

☐ ICX:

Notes:

6. Test Location:

Phase to Neutral; Phase to Phase; Phase to Earth; and/or Neutral to Earth

B. Operating condition abbreviations:

N – Normal operating condition (e.g., normal operation, or open fuse); S –Single fault condition

5.6.6.2	TABLE: Resistance of protective conductors and terminations				N/A
Accessible part	Test current (A)	Duration (min)	Voltage drop (V)	Resistance (Ω)	
--	--	--	--	--	
Supplementary information:					

5.7.2.2, 5.7.4	TABLE: Earthed accessible conductive part		N/A
Supply voltage	--	—	
Location	Test conditions specified in 6.1 of IEC 60990 or Fault Condition No in IEC 60990 clause 6.2.2.1		Touch current (Ma)

Shenzhen Anbotek Compliance Laboratory Limited

Address: 1/F., Building D, Sogood Science and Technology Park, Sanwei Community, Hangcheng Street, Bao'an District, Shenzhen, Guangdong, China.

Tel: (86) 755-26066440 Fax: (86) 755-26014772 Email: service@anbotek.com



Hotline
400-003-0500
www.anbotek.com

IEC 62368-1

Clause	Requirement + Test	Result - Remark	Verdict
--------	--------------------	-----------------	---------

	through 6.2.2.8, except for 6.2.2.7	
<u>Measured to protective earthing terminal</u>	1	<u>N/A</u>
	2	<u>N/A</u>
	3	<u>N/A</u>
	4	<u>N/A</u>
	5	<u>N/A</u>
	6	<u>N/A</u>
	8	<u>N/A</u>

Supplementary Information: --

Notes:

[1] Supply voltage is the anticipated maximum Touch Voltage

[2] Earthed neutral conductor [Voltage differences less than 1% or more]

[3] Specify method used for measurement as described in IEC 60990 sub-clause 4.3

[4] IEC60990, sub-clause 6.2.2.7, Fault 7 not applicable.

[5] (*) IEC60990, sub-clause 6.2.2.2 is not applicable if switch or disconnect device (e.g., appliance coupler) provided.

N: Normal condition, R: Reverse condition.

6.2.2	Table: Electrical power sources (PS) measurements for classification				P
Source	Description	Measurement	Max Power after 3 s	Max Power after 5 s ^{#)}	PS Classification
AC Output	All primary circuit/ components	Power (W) :	--	--	PS3 (declared)
		V _A (V) :	--	--	
		I _A (A) :	--	--	
Battery	Battery cell output	Power (W) :	>100W	>100W	PS3
		V _A (V) :	--	--	
		I _A (A) :	--	--	
USB A Output load 5Vdc/2.4A					
Output	5V output (Normal condition)	Power (W) :	12.68	--	PS1
		V _A (V) :	4.86	--	
		I _A (A) :	2.61	--	
USB A Output load 5Vdc/2.4A					
Output	5V output (Normal condition)	Power (W) :	13.10	--	PS1
		V _A (V) :	4.85	--	
		I _A (A) :	2.70	--	
FAST-USB A Output load 5Vdc/2.4A					
Output	5V output	Power (W) :	13.29	--	PS1

Shenzhen Anbotek Compliance Laboratory Limited

Address: 1/F., Building D, Sogood Science and Technology Park, Sanwei Community, Hangcheng Street, Bao'an District, Shenzhen, Guangdong, China.

Tel: (86) 755-26066440 Fax: (86) 755-26014772 Email: service@anbotek.com



Hotline

400-003-0500

www.anbotek.com

IEC 62368-1

Clause	Requirement + Test		Result - Remark		Verdict
	(Normal condition)	V _A (V) :	4.85	--	
		I _A (A) :	2.74	--	
FAST-USB A Output load 9Vdc/2.0A					
Output	9V output (Normal condition)	Power (W) :	20.69	20.69	PS2
		V _A (V) :	8.55	8.55	
		I _A (A) :	2.42	2.42	
FAST-USB A Output load 12Vdc/1.5A					
Output	12V output (Normal condition)	Power (W) :	20.70	20.70	PS2
		V _A (V) :	10.78	10.78	
		I _A (A) :	1.92	1.92	
FAST-USB A Output load 5Vdc/2.4A					
Output	5V output (Normal condition)	Power (W) :	13.29	--	PS1
		V _A (V) :	4.85	--	
		I _A (A) :	2.74	--	
FAST-USB A Output load 9Vdc/2.0A					
Output	9V output (Normal condition)	Power (W) :	20.31	20.31	PS2
		V _A (V) :	8.36	8.36	
		I _A (A) :	2.43	2.43	
FAST-USB A Output load 12Vdc/1.5A					
Output	12V output (Normal condition)	Power (W) :	20.40	20.40	PS2
		V _A (V) :	10.68	10.68	
		I _A (A) :	1.91	1.91	
USB-C Output load 5Vdc/5A					
Output	5V output (Normal condition)	Power (W) :	25.94	25.94	PS2
		V _A (V) :	4.76	4.76	
		I _A (A) :	5.45	5.45	
USB-C Output load 9Vdc/5A					
Output	9V output (Normal condition)	Power (W) :	47.91	47.91	PS2
		V _A (V) :	8.79	8.79	
		I _A (A) :	5.45	5.45	
USB-C Output load 12Vdc/5A					
Output	12V output (Normal condition)	Power (W) :	64.26	64.26	PS2
		V _A (V) :	11.79	11.79	
		I _A (A) :	5.45	5.45	

Shenzhen Anbotek Compliance Laboratory Limited

Address: 1/F., Building D, Sogood Science and Technology Park, Sanwei Community, Hangcheng Street, Bao'an District, Shenzhen, Guangdong, China.

Tel: (86) 755-26066440 Fax: (86) 755-26014772 Email: service@anbotek.com



Hotline

400-003-0500

www.anbotek.com

IEC 62368-1

Clause	Requirement + Test	Result - Remark	Verdict
--------	--------------------	-----------------	---------

USB-C Output load 15Vdc/5A

Output	15V output (Normal condition)	Power (W) :	80.88	80.88	PS2
		V _A (V) :	14.84	14.84	
		I _A (A) :	5.45	5.45	

USB-C Output load 20Vdc/5A

Output	20V output (Normal condition)	Power (W) :	108.73	108.73	PS3
		V _A (V) :	19.95	19.95	
		I _A (A) :	5.45	5.45	

USB-C Output load 5Vdc/5A

Output	5V output (Normal condition)	Power (W) :	25.31	25.31	PS2
		V _A (V) :	4.61	4.61	
		I _A (A) :	5.49	5.49	

USB-C Output load 9Vdc/5A

Output	9V output (Normal condition)	Power (W) :	47.82	47.82	PS2
		V _A (V) :	8.71	8.71	
		I _A (A) :	5.49	5.49	

USB-C Output load 12Vdc/5A

Output	12V output (Normal condition)	Power (W) :	64.23	64.23	PS2
		V _A (V) :	11.72	11.72	
		I _A (A) :	5.48	5.48	

USB-C Output load 15Vdc/5A

Output	15V output (Normal condition)	Power (W) :	80.78	80.78	PS2
		V _A (V) :	14.74	14.74	
		I _A (A) :	5.48	5.48	

USB-C Output load 20Vdc/5A

Output	20V output (Normal condition)	Power (W) :	108.28	108.28	PS3
		V _A (V) :	19.76	19.76	
		I _A (A) :	5.48	5.48	

Supplementary Information:

#: Test method-power measurement for worst-case fault.

6.2.3.1	Table: Determination of Potential Ignition Sources (Arcing PIS)	P
---------	---	---



IEC 62368-1

Clause	Requirement + Test	Result - Remark	Verdict
--------	--------------------	-----------------	---------

Location	Open circuit voltage After 3 s (V _p)	Measured r.m.s current (I _{rms})	Calculated value (V _p x I _{rms})	Arcing PIS? Yes / No
Input terminal, All Internal circuits	--	--	--	Yes
All secondary circuits	<50	>0.3	>15	No

Supplementary information:

All primary circuit/components were considered as arcing PIS, the open circuit of all secondary components/ circuit were not exceeded 50V.

An Arcing PIS requires a minimum of 50 V (peak) a.c. or d.c. An Arcing PIS is established when the product of the open circuit voltage (V_p) and normal operating condition rms current (I_{rms}) is greater than 15.

6.2.3.2 Table: Determination of Potential Ignition Sources (Resistive PIS)**P**

Circuit Location (x-y)	Operating Condition (Normal / Describe Single Fault)	Measured wattage or VA During first 30 s (W / VA)	Measured wattage or VA After 30 s (W / VA)	Protective Circuit, Regulator, or PTC Operated? Yes / No (Comment)	Resistive PIS? Yes/No
Input terminal, All Internal circuits	--	--	--	--	Yes
All secondary circuits	--	<100	>15	--	Yes

Supplementary Information:

All primary components were considered as resistive PIS, the output circuits/ components were considered as resistive PIS.

A combination of voltmeter, VA and ammeter IA may be used instead of a wattmeter.

If a separate voltmeter and ammeter are used, the product of (VA x IA) is used to determine Resistive PIS classification.

A Resistive PIS: (a) dissipates more than 15 W, measured after 30 s of normal operation, or (b) under single fault conditions has either a power exceeding 100 W measured immediately after the introduction of the fault if electronic circuits, regulators or PTC devices are used, or has an available power exceeding 15 W measured 30 s after introduction of the fault.

8.5.5	TABLE: High Pressure Lamp	N/A
Description	Values	Energy Source Classification
Lamp type	--	—
Manufacturer	--	—
Cat no.	--	—
Pressure (cold) (MPa)	--	MS_
Pressure (operating) (MPa)	--	MS_
Operating time (minutes)	--	—
Explosion method	--	—
Max particle length escaping enclosure (mm) .:	--	MS_

Shenzhen Anbotek Compliance Laboratory Limited

Address: 1/F., Building D, Sogood Science and Technology Park, Sanwei Community, Hangcheng Street, Bao'an District, Shenzhen, Guangdong, China.

Tel: (86) 755-26066440 Fax: (86) 755-26014772 Email: service@anbotek.com



Hotline

400-003-0500

www.anbotek.com

IEC 62368-1

Clause	Requirement + Test	Result - Remark	Verdict
--------	--------------------	-----------------	---------

Max particle length beyond 1 m (mm)	--	MS_
Overall result	--	
Supplementary information: --		

B.2.5		TABLE: Input test						P
U (V)	I (A)	I rated (A)	P (W)	P rated (W)	Fuse No.	I fuse (A)	Condition/status	
198V/50Hz	9.646		1843.7	--	F1	9.646	AC output: 5VDC/2.4A, and Max. Normal load. Battery current: 8.836A.	
198V/60Hz	9.471		1837.6	--	F1	9.471		
200V/50Hz	8.499	10.0	1816.5	--	F1	8.499		
200V/60Hz	8.502	10.0	1822.8	--	F1	8.502		
240V/50Hz	7.764	10.0	1810.5	--	F1	7.764		
240V/60Hz	7.805	10.0	1815.2	--	F1	7.805		
264V/50Hz	7.056		1805.1	--	F1	7.056		
264V/60Hz	7.116		1807.4	--	F1	7.116		
Power supplied by full charger battery								
11VDC	7.85	10	86.35	--	--	--	Max. Normal load. Battery current: 9.023A.	
Supplementary information: --								

B.3	TABLE: Abnormal operating condition tests							P
Ambient temperature (°C)					25.0			—
Power source for EUT: Manufacturer, model/type, output rating ..					--			—
Component No.	Abnormal Condition	Supply voltage, (V)	Test time (ms)	Fuse no.	Fuse current, (A)	T-couple	Temp. (°C)	Observation
USB-C1 Output (20V output)	O-L	11VDC	2hrs 32 mins	--	--	Type K	T3 winding: 72.1°C, T1 winding: 70.6°C, Battery surface: 38.6°C, Enclosure (outside, near T1,T3): 43.2°C, Ambient: 25.5°C.	Max. loaded current was 5.48A, unit normal working. No damage, no explosion, no hazard. Battery current: 9.861A.

Shenzhen Anbotek Compliance Laboratory Limited

Address: 1/F., Building D, Sogood Science and Technology Park, Sanwei Community, Hangcheng Street, Bao'an District, Shenzhen, Guangdong, China.

Tel: (86) 755-26066440 Fax: (86) 755-26014772 Email: service@anbotek.com



Hotline
400-003-0500
www.anbotek.com

IEC 62368-1

Clause	Requirement + Test					Result - Remark		Verdict
Opening	Covering of ventilation openings	11VDC	2hrs 40 mins	--	--	Type K	T3 winding: 71.6°C, T1 winding: 70.8°C, Battery surface: 39.1°C, Enclosure (outside, near T1,T3): 43.3°C, Ambient: 25.2°C.	Unit normal working. No damage, no explosion, no hazard. Battery current: 8.936A.
DC Fan	blocked	11VDC	2hrs 40 mins	--	--	Type K	T3 winding: 72.5°C, T1 winding: 70.4°C, Battery surface: 39.3°C, Enclosure (outside, near T1,T3): 43.6°C, Ambient: 25.6°C.	unit normal working. No damage, no explosion, no hazard. Battery current: 9.017A.

Supplementary information:

Test table is provided to record abnormal and fault conditions for all applicable energy sources including Thermal burn injury. Column "Abnormal/Fault." Specify if test condition by indicating "Abnormal" then the condition for a Clause B.3 test or "Single Fault" then the condition for Clause B.4.

S-C: short circuit, O-L: overload, O-C: open circuit; CD: Components damaged;

The Hi-pot test conducted successfully after the completion of fault condition test.

Temperature limits under the fault condition:

1. Temperature limits under the fault condition: T1 winding limit: 165°C (class B), Enclosure outside: 87°C, For other parts: 300°C.

B.4 TABLE: Fault condition tests								P
Ambient temperature (°C)					25.0°C (unless otherwise specified)			—
Power source for EUT: Manufacturer, model/type, output rating ..					--			—
Component No.	Fault Condition	Supply voltage, (V)	Test time (ms)	Fuse no.	Fuse current, (A)	T-couple	Temp. (°C)	Observation
AC power supplied (with empty battery) and Max. AC output load								

Shenzhen Anbotek Compliance Laboratory Limited

Address: 1/F., Building D, Sogood Science and Technology Park, Sanwei Community, Hangcheng Street, Bao'an District, Shenzhen, Guangdong, China.

Tel: (86) 755-26066440 Fax: (86) 755-26014772 Email: service@anbotek.com



Hotline

400-003-0500

www.anbotek.com

IEC 62368-1

Clause	Requirement + Test						Result - Remark	Verdict
U1 pin 2-3	S-C	264VAC	10min	--	--	--	--	After S-C, unit normal working. No damage, no hazard. Battery current: 8.506A.
U2 pin 1-8	S-C	264VAC	10min	--	--	--	--	After S-C, unit shut down immediately, protection. No damage, no explosion, no hazard. Battery current: 0.001A.
Battery board of PCB Q1 pin D-S	S-C	264VAC	7h	--	--	--	Battery surface: 39.1°C, Ambient: 25.5°C.	After S-C, unit normal working. No damage, no explosion, no hazard. Battery current: 9.852A.
Supplementary information:								
1) S-C: short circuit, O-L: overload, O-C: open circuit; C-D: components damaged;								
2) The Hi-pot test conducted successfully after the completion of fault condition test;								

Shenzhen Anbotek Compliance Laboratory Limited

Address: 1/F., Building D, Sogood Science and Technology Park, Sanwei Community, Hangcheng Street, Bao'an District, Shenzhen, Guangdong, China.

Tel: (86) 755-26066440 Fax: (86) 755-26014772 Email: service@anbotek.com



Hotline

400-003-0500

www.anbotek.com

IEC 62368-1

Clause	Requirement + Test	Result - Remark	Verdict
--------	--------------------	-----------------	---------

Annex M	TABLE: Batteries								N/A	
The tests of Annex M are applicable only when appropriate battery data is not available										
Is it possible to install the battery in a reverse polarity position? :										
	Non-rechargeable batteries			Rechargeable batteries						
	Discharging		Un-intentional charging	Charging		Discharging		Reversed charging		
	Meas. current	Manuf. Specs.		Meas. current	Manuf. Specs.	Meas. current	Manuf. Specs.	Meas. current	Manuf. Specs.	
Max. current during normal condition	--	--	--	--	--	--	--	--	--	
Max. current during fault condition	--	--	--	--	--	--	--	--	--	
Test results:							--		Verdict	
- Chemical leaks									N/A	
- Explosion of the battery									N/A	
- Emission of flame or expulsion of molten metal									N/A	
- Electric strength tests of equipment after completion of tests									--	
Supplementary information:										

Annex M.4	Table: Additional safeguards for equipment containing secondary lithium batteries					N/A
Battery/Cell No.	Test conditions	Measurements			Observation	
		U (V)	I (A)	Temp (°C)		
--	--	--	--	--	--	
Supplementary Information:						
Battery identification	Charging at T_{lowest} (°C)	Observation	Charging at $T_{highest}$ (°C)	Observation		
--	--	Battery current: --	--	Battery current: --		
Supplementary Information:						

IEC 62368-1

Clause	Requirement + Test	Result - Remark	Verdict
--------	--------------------	-----------------	---------

Annex Q.1	TABLE: Circuits intended for interconnection with building wiring (LPS)	P
------------------	--	----------

Note: Measured UOC (V) with all load circuits disconnected:

Output Circuit	Components	U _{oc} (V)	I _{sc} (A)		S (VA)	
			Meas.	Limit	Meas.	Limit
USB A Output load 5Vdc/2.4A						
Output	Normal operation	5.09	2.61	8.0	12.68	100
USB A Output load 5Vdc/2.4A						
Output	Normal operation	5.09	2.70	8.0	13.10	100
FAST-USB A Output load 5Vdc/2.4A						
Output	Normal operation	5.12	2.74	8.0	13.29	100
FAST-USB A Output load 9Vdc/2.0A						
Output	Normal operation	9.12	2.77	8.0	20.69	100
FAST-USB A Output load 12Vdc/1.5A						
Output	Normal operation	12.07	2.75	8.0	20.70	100
FAST-USB A Output load 5Vdc/2.4A						
Output	Normal operation	5.12	2.74	8.0	13.29	100
FAST-USB A Output load 9Vdc/2.0A						
Output	Normal operation	9.15	2.75	8.0	20.31	100
FAST-USB A Output load 12Vdc/1.5A						
Output	Normal operation	12.22	2.75	8.0	20.40	100
USB-C Output load 5Vdc/5A						
Output	Normal operation	5.12	5.45	8.0	25.94	100
USB-C Output load 9Vdc/5A						
Output	Normal operation	9.13	5.45	8.0	47.91	100
USB-C Output load 12Vdc/5A						
Output	Normal operation	12.13	5.45	8.0	64.26	100
USB-C Output load 15Vdc/5A						
Output	Normal operation	15.18	5.45	8.0	80.88	100
USB-C Output load 20Vdc/5A						
Output	Normal operation	20.27	5.45	8.0	108.73	100
USB-C Output load 5Vdc/5A						
Output	Normal operation	5.09	5.49	8.0	25.31	100

Shenzhen Anbotek Compliance Laboratory Limited

Address: 1/F., Building D, Sogood Science and Technology Park, Sanwei Community, Hangcheng Street, Bao'an District, Shenzhen, Guangdong, China.

Tel: (86) 755-26066440 Fax: (86) 755-26014772 Email: service@anbotek.com



Hotline

400-003-0500

www.anbotek.com

IEC 62368-1

Clause	Requirement + Test	Result - Remark	Verdict
--------	--------------------	-----------------	---------

USB-C Output load 9Vdc/5A

Output	Normal operation	9.06	5.49	8.0	47.82	100
--------	------------------	------	------	-----	-------	-----

USB-C Output load 12Vdc/5A

Output	Normal operation	12.09	5.48	8.0	64.23	100
--------	------------------	-------	------	-----	-------	-----

USB-C Output load 15Vdc/5A

Output	Normal operation	15.11	5.48	8.0	80.78	100
--------	------------------	-------	------	-----	-------	-----

USB-C Output load 20Vdc/5A

Output	Normal operation	20.13	5.48	8.0	108.28	100
--------	------------------	-------	------	-----	--------	-----

Supplementary Information:

T.2, T.3, T.4, T.5	TABLE: Steady force test					P
Part/Location	Material	Thickness (mm)	Force (N)	Test Duration (sec)	Observation	
Internal components	--	--	10	5	Clearances and creepage distances still complied with the requirements of this standard	
Enclosure Top	See table 4.1.2	0.75	100	5	No crack, no damaged	
Enclosure Bottom	See table 4.1.2	0.75	100	5	No crack, no damaged	
Enclosure Side	See table 4.1.2	0.75	100	5	No crack, no damaged	
Supplementary information: --						

T.6, T.9	TABLE: Impact tests				N/A
Part/Location	Material	Thickness (mm)	Vertical distance (mm)	Observation	
--	--	--	--	--	
Supplementary information:					

T.7	TABLE: Drop tests				P
Part/Location	Material	Thickness (mm)	Drop Height (mm)	Observation	
Enclosure Top	See table 4.1.2	0.75	1000	No damaged	
Enclosure Bottom	See table 4.1.2	0.75	1000	No damaged	
Enclosure Side	See table 4.1.2	0.75	1000	No damaged	
Supplementary information: --					

Shenzhen Anbotek Compliance Laboratory Limited

Address: 1/F., Building D, Sogood Science and Technology Park, Sanwei Community, Hangcheng Street, Bao'an District, Shenzhen, Guangdong, China.

Tel: (86) 755-26066440 Fax: (86) 755-26014772 Email: service@anbotek.com



Hotline
400-003-0500
www.anbotek.com

IEC 62368-1

Clause	Requirement + Test	Result - Remark	Verdict
--------	--------------------	-----------------	---------

T.8	TABLE: Stress relief test					P
Part/Location	Material	Thickness (mm)	Oven Temperature (°C)	Duration (h)	Observation	
Overall enclosure	See table 4.1.2	0.75	70.0	7	No damaged	
Supplementary information: --						

Shenzhen Anbotek Compliance Laboratory Limited

Address: 1/F., Building D, Sogood Science and Technology Park, Sanwei Community, Hangcheng Street, Bao'an District, Shenzhen, Guangdong, China.

Tel: (86) 755-26066440 Fax: (86) 755-26014772 Email: service@anbotek.com



Hotline
400-003-0500
www.anbotek.com

IEC62368_1D - ATTACHMENT

Clause	Requirement + Test	Result - Remark	Verdict
--------	--------------------	-----------------	---------

ATTACHMENT TO TEST REPORT

IEC 62368-1

EUROPEAN GROUP DIFFERENCES AND NATIONAL DIFFERENCES

(Audio/video, information and communication technology equipment - Part 1: Safety requirements)

Differences according to: EN 62368-1:2014+A11:2017

Attachment Form No.: EU_GD_IEC62368_1D_II

Attachment Originator.....: Nemko AS

Master Attachment: Date 2021-02-04

Copyright © 2021 IEC System for Conformity Testing and Certification of Electrical Equipment (IECEE), Geneva, Switzerland. All rights reserved.

	CENELEC COMMON MODIFICATIONS (EN)					Verdict
	Clauses, subclauses, notes, tables, figures and annexes which are additional to those in IEC 62368-1:2014 are prefixed "Z".					--
CONTENT S	Add the following annexes: Annex ZA (normative) Normative references to international publications with their corresponding European publications Annex ZB (normative) Special national conditions Annex ZC (informative) A-deviations Annex ZD (informative) IEC and CENELEC code designations for flexible cords					P
	Delete all the "country" notes in the reference document (IEC 62368-1:2014) according to the following list:					P
	0.2.1	Note	1	Note 3	4.1.15	Note
	4.7.3	Note 1 and 2	5.2.2.2	Note	5.4.2.3.2.2 Table 13	Note c
	5.4.2.3.2.4	Note 1 and 3	5.4.2.5	Note 2	5.4.5.1	Note
	5.5.2.1	Note	5.5.6	Note	5.6.4.2.1	Note 2 and 3
	5.7.5	Note	5.7.6.1	Note 1 and 2	10.2.1 Table 39	Note 2, 3 and 4
	10.5.3	Note 2	10.6.2.1	Note 3	F.3.3.6	Note 3
	For special national conditions, see Annex ZB.					N/A
1	Add the following note: NOTE Z1 The use of certain substances in electrical and electronic equipment is restricted within the EU: see Directive 2011/65/EU.					N/A

Shenzhen Anbotek Compliance Laboratory Limited

Address: 1/F., Building D, Sogood Science and Technology Park, Sanwei Community, Hangcheng Street, Bao'an District, Shenzhen, Guangdong, China.

Tel: (86) 755-26066440 Fax: (86) 755-26014772 Email: service@anbotek.com



Hotline

400-003-0500

www.anbotek.com

IEC62368_1D - ATTACHMENT

Clause	Requirement + Test	Result - Remark	Verdict
4.Z1	<p>Add the following new subclause after 4.9:</p> <p>To protect against excessive current, short-circuits and earth faults in circuits connected to an a.c. mains, protective devices shall be included either as integral parts of the equipment or as parts of the building installation, subject to the following, a), b) and c):</p> <p>a) except as detailed in b) and c), protective devices necessary to comply with the requirements of B.3.1 and B.4 shall be included as parts of the equipment;</p> <p>b) for components in series with the mains input to the equipment such as the supply cord, appliance coupler, r.f.i. filter and switch, short-circuit and earth fault protection may be provided by protective devices in the building installation;</p> <p>c) it is permitted for pluggable equipment type B or permanently connected equipment, to rely on dedicated overcurrent and short-circuit protection in the building installation, provided that the means of protection, e.g. fuses or circuit breakers, is fully specified in the installation instructions.</p> <p>If reliance is placed on protection in the building installation, the installation instructions shall so state, except that for pluggable equipment type A the building installation shall be regarded as providing protection in accordance with the rating of the wall socket outlet.</p>		N/A
5.4.2.3.2.4	<p>Add the following to the end of this subclause:</p> <p>The requirement for interconnection with external circuit is in addition given in EN 50491-3:2009.</p>		N/A
10.2.1 *	<p>Add the following to ^{c)} and ^{d)} in table 39:</p> <p>For additional requirements, see 10.5.1.</p>		N/A

Shenzhen Anbotek Compliance Laboratory Limited

Address: 1/F., Building D, Sogood Science and Technology Park, Sanwei Community, Hangcheng Street, Bao'an District, Shenzhen, Guangdong, China.

Tel: (86) 755-26066440 Fax: (86) 755-26014772 Email: service@anbotek.com



Hotline

400-003-0500

www.anbotek.com

IEC62368_1D - ATTACHMENT

Clause	Requirement + Test	Result - Remark	Verdict
10.5.1 *	<p>Add the following after the first paragraph:</p> <p><i>For RS 1 compliance is checked by measurement under the following conditions:</i></p> <p><i>In addition to the normal operating conditions, all controls adjustable from the outside by hand, by any object such as a tool or a coin, and those internal adjustments or presets which are not locked in a reliable manner, are adjusted so as to give maximum radiation whilst maintaining an intelligible picture for 1 h, at the end of which the measurement is made.</i></p> <p>NOTE Z1 Soldered joints and paint lockings are examples of adequate locking.</p> <p><i>The dose-rate is determined by means of a radiation monitor with an effective area of 10 cm², at any point 10 cm from the outer surface of the apparatus.</i></p> <p><i>Moreover, the measurement shall be made under fault conditions causing an increase of the high-voltage, provided an intelligible picture is maintained for 1 h, at the end of which the measurement is made.</i></p> <p><i>For RS1, the dose-rate shall not exceed 1 µSv/h taking account of the background level.</i></p> <p>NOTE Z2 These values appear in Directive 96/29/Euratom of 13 May 1996.</p>		N/A
10.6.1 *	<p>Add the following paragraph to the end of the subclause:</p> <p>EN 71-1:2011, 4.20 and the related tests methods and measurement distances apply.</p>		N/A
10.Z1 *	<p>Add the following new subclause after 10.6.5.</p> <p>10.Z1 Non-ionizing radiation from radio frequencies in the range 0 to 300 GHz</p> <p>The amount of non-ionizing radiation is regulated by European Council Recommendation 1999/519/EC of 12 July 1999 on the limitation of exposure of the general public to electromagnetic fields (0 Hz to 300 GHz).</p> <p>For intentional radiators, ICNIRP guidelines should be taken into account for Limiting Exposure to Time-Varying Electric, Magnetic, and Electromagnetic Fields (up to 300 GHz). For hand-held and body-mounted devices, attention is drawn to EN 50360 and EN 50566</p>		N/A
G.7.1	<p>Add the following note:</p> <p>NOTE Z1 The harmonized code designations corresponding to the IEC cord types are given in Annex ZD.</p>		N/A

Shenzhen Anbotek Compliance Laboratory Limited

Address: 1/F., Building D, Sogood Science and Technology Park, Sanwei Community, Hangcheng Street, Bao'an District, Shenzhen, Guangdong, China.

Tel: (86) 755-26066440 Fax: (86) 755-26014772 Email: service@anbotek.com



Hotline

400-003-0500

www.anbotek.com

IEC62368_1D - ATTACHMENT			
Clause	Requirement + Test	Result - Remark	Verdict
Bibliography	<p>Add the following standards:</p> <p>Add the following notes for the standards indicated:</p> <p>IEC 60130-9 NOTE Harmonized as EN 60130-9.</p> <p>IEC 60269-2 NOTE Harmonized as HD 60269-2.</p> <p>IEC 60309-1 NOTE Harmonized as EN 60309-1.</p> <p>IEC 60364 NOTE some parts harmonized in HD 384/HD 60364 series.</p> <p>IEC 60601-2-4 NOTE Harmonized as EN 60601-2-4.</p> <p>IEC 60664-5 NOTE Harmonized as EN 60664-5.</p> <p>IEC 61032:1997 NOTE Harmonized as EN 61032:1998 (not modified).</p> <p>IEC 61508-1 NOTE Harmonized as EN 61508-1.</p> <p>IEC 61558-2-1 NOTE Harmonized as EN 61558-2-1.</p> <p>IEC 61558-2-4 NOTE Harmonized as EN 61558-2-4.</p> <p>IEC 61558-2-6 NOTE Harmonized as EN 61558-2-6.</p> <p>IEC 61643-1 NOTE Harmonized as EN 61643-1.</p> <p>IEC 61643-21 NOTE Harmonized as EN 61643-21.</p> <p>IEC 61643-311 NOTE Harmonized as EN 61643-311.</p> <p>IEC 61643-321 NOTE Harmonized as EN 61643-321.</p> <p>IEC 61643-331 NOTE Harmonized as EN 61643-331.</p>		N/A
ZB	ANNEX ZB, SPECIAL NATIONAL CONDITIONS (EN)		N/A
4.1.15	<p>Denmark, Finland, Norway and Sweden</p> <p>To the end of the subclause the following is added:</p> <p>Class I pluggable equipment type A intended for connection to other equipment or a network shall, if safety relies on connection to reliable earthing or if surge suppressors are connected between the network terminals and accessible parts, have a marking stating that the equipment shall be connected to an earthed mains socket-outlet.</p> <p>The marking text in the applicable countries shall be as follows:</p> <p>In Denmark: "Apparatets stikprop skal tilsluttes en stikkontakt med jord som giver forbindelse til stikproppens jord."</p> <p>In Finland: "Laite on liitettävä suojakoskettimilla varustettuun pistorasiaan"</p> <p>In Norway: "Apparatet må tilkoples jordet stikkontakt"</p> <p>In Sweden: "Apparaten skall anslutas till jordat uttag"</p>		P
4.7.3	<p>United Kingdom</p> <p>To the end of the subclause the following is added:</p> <p>The torque test is performed using a socket-outlet complying with BS 1363, and the plug part shall be assessed to the relevant clauses of BS 1363. Also see Annex G.4.2 of this annex</p>		N/A

IEC62368_1D - ATTACHMENT

Clause	Requirement + Test	Result - Remark	Verdict
5.2.2.2	Denmark After the 2nd paragraph add the following: A warning (marking safeguard) for high touch current is required if the touch current exceeds the limits of 3,5 mA a.c. or 10 mA d.c.		P
5.4.11.1 and Annex G	Finland and Sweden To the end of the subclause the following is added: For separation of the telecommunication network from earth the following is applicable: If this insulation is solid, including insulation forming part of a component, it shall at least consist of either <ul style="list-style-type: none"> • two layers of thin sheet material, each of which shall pass the electric strength test below, or • one layer having a distance through insulation of at least 0,4 mm, which shall pass the electric strength test below. If this insulation forms part of a semiconductor component (e.g. an optocoupler), there is no distance through insulation requirement for the insulation consisting of an insulating compound completely filling the casing, so that clearances and creepage distances do not exist, if the component passes the electric strength test in accordance with the compliance clause below and in addition <ul style="list-style-type: none"> • passes the tests and inspection criteria of 5.4.8 with an electric strength test of 1,5 kV multiplied by 1,6 (the electric strength test of 5.4.9 shall be performed using 1,5 kV), and • is subject to routine testing for electric strength during manufacturing, using a test voltage of 1,5kV. It is permitted to bridge this insulation with a capacitor complying with EN 60384-14:2005, subclass Y2. A capacitor classified Y3 according to EN 60384-14:2005, may bridge this insulation under the following conditions: <ul style="list-style-type: none"> • the insulation requirements are satisfied by having a capacitor classified Y3 as defined by EN 60384-14, which in addition to the Y3 testing, is tested with an impulse test of 2,5 kV defined in 5.4.11; • the additional testing shall be performed on all the test specimens as described in EN 60384-14; the impulse test of 2,5 kV is to be performed before the endurance test in EN 60384-14, in the sequence of tests as described in EN 60384-14. 		N/A

Shenzhen Anbotek Compliance Laboratory Limited

Address: 1/F., Building D, Sogood Science and Technology Park, Sanwei Community, Hangcheng Street, Bao'an District, Shenzhen, Guangdong, China.

Tel: (86) 755-26066440 Fax: (86) 755-26014772 Email: service@anbotek.com



Hotline

400-003-0500

www.anbotek.com

IEC62368_1D - ATTACHMENT

Clause	Requirement + Test	Result - Remark	Verdict
5.5.2.1	Norway After the 3rd paragraph the following is added: Due to the IT power system used, capacitors are required to be rated for the applicable line-to-line voltage (230 V).		P
5.5.6	Finland, Norway and Sweden To the end of the subclause the following is added: Resistors used as basic safeguard or bridging basic insulation in class I pluggable equipment type A shall comply with G.10.1 and the test of G.10.2.		N/A
5.6.1	Denmark Add to the end of the subclause Due to many existing installations where the socket-outlets can be protected with fuses with higher rating than the rating of the socket-outlets the protection for pluggable equipment type A shall be an integral part of the equipment. <i>Justification:</i> In Denmark an existing 13 A socket outlet can be protected by a 20 A fuse.		N/A
5.6.4.2.1	Ireland and United Kingdom After the indent for pluggable equipment type A , the following is added: – the protective current rating is taken to be 13 A, this being the largest rating of fuse used in the mains plug.		N/A
5.6.5.1	To the second paragraph the following is added: The range of conductor sizes of flexible cords to be accepted by terminals for equipment with a rated current over 10 A and up to and including 13 A is: 1,25 mm ² to 1,5 mm ² in cross-sectional area.		N/A
5.7.5	Denmark To the end of the subclause the following is added: The installation instruction shall be affixed to the equipment if the protective conductor current exceeds the limits of 3,5 mA a.c. or 10 mA d.c.		N/A

Shenzhen Anbotek Compliance Laboratory Limited

Address: 1/F., Building D, Sogood Science and Technology Park, Sanwei Community, Hangcheng Street, Bao'an District, Shenzhen, Guangdong, China.

Tel: (86) 755-26066440 Fax: (86) 755-26014772 Email: service@anbotek.com



Hotline

400-003-0500

www.anbotek.com

IEC62368_1D - ATTACHMENT

Clause	Requirement + Test	Result - Remark	Verdict
5.7.6.1	<p>Norway and Sweden</p> <p>To the end of the subclause the following is added:</p> <p>The screen of the television distribution system is normally not earthed at the entrance of the building and there is normally no equipotential bonding system within the building. Therefore the protective earthing of the building installation needs to be isolated from the screen of a cable distribution system.</p> <p>It is however accepted to provide the insulation external to the equipment by an adapter or an interconnection cable with galvanic isolator, which may be provided by a retailer, for example.</p> <p>The user manual shall then have the following or similar information in Norwegian and Swedish language respectively, depending on in what country the equipment is intended to be used in:</p> <p>“Apparatus connected to the protective earthing of the building installation through the mains connection or through other apparatus with a connection to protective earthing – and to a television distribution system using coaxial cable, may in some circumstances create a fire hazard. Connection to a television distribution system therefore has to be provided through a device providing electrical isolation below a certain frequency range (galvanic isolator, see EN 60728-11)”</p> <p>NOTE In Norway, due to regulation for CATV-installations, and in Sweden, a galvanic isolator shall provide electrical insulation below 5 MHz. The insulation shall withstand a dielectric strength of 1,5 kV r.m.s., 50 Hz or 60 Hz, for 1 min.</p> <p>Translation to Norwegian (the Swedish text will also be accepted in Norway):</p> <p>“Apparater som er koplet til beskyttelsesjord via nettplugg og/eller via annet jordtilkøp utstyr – og er tilkøp et koaksialbasert kabel-TV nett, kan forårsake brannfare. For å unngå dette skal det ved tilkøp av apparater til kabel-TV nett installeres en galvanisk isolator mellom apparatet og kabel-TV nettet.”</p> <p>Translation to Swedish:</p> <p>“Apparater som är kopplad till skyddsjord via jordat vägguttag och/eller via annan utrustning och samtidigt är kopplad till kabel-TV nät kan i vissa fall medföra risk för brand. För att undvika detta skall vid anslutning av apparaten till kabel-TV nät galvanisk isolator finnas mellan apparaten och kabel-TV nätet.”</p>		N/A

Shenzhen Anbotek Compliance Laboratory Limited

Address: 1/F., Building D, Sogood Science and Technology Park, Sanwei Community, Hangcheng Street, Bao'an District, Shenzhen, Guangdong, China.

Tel: (86) 755-26066440 Fax: (86) 755-26014772 Email: service@anbotek.com



Hotline

400-003-0500

www.anbotek.com

IEC62368_1D - ATTACHMENT

Clause	Requirement + Test	Result - Remark	Verdict
5.7.6.2	Denmark To the end of the subclause the following is added: The warning (marking safeguard) for high touch current is required if the touch current or the protective current exceed the limits of 3,5 mA .		N/A
B.3.1 and B.4	Ireland and United Kingdom The following is applicable: To protect against excessive currents and short-circuits in the primary circuit of direct plug-in equipment , tests according to Annexes B.3.1 and B.4 shall be conducted using an external miniature circuit breaker complying with EN 60898-1, Type B, rated 32A. If the equipment does not pass these tests, suitable protective devices shall be included as an integral part of the direct plug-in equipment , until the requirements of Annexes B.3.1 and B.4 are met		P
G.4.2 *	Denmark To the end of the subclause the following is added: Supply cords of single phase appliances having a rated current not exceeding 13 A shall be provided with a plug according to DS 60884-2-D1:2011. CLASS I EQUIPMENT provided with socket-outlets with earth contacts or which are intended to be used in locations where protection against indirect contact is required according to the wiring rules shall be provided with a plug in accordance with standard sheet DK 2-1a or DK 2-5a. If a single-phase equipment having a RATED CURRENT exceeding 13 A or if a poly-phase equipment is provided with a supply cord with a plug, this plug shall be in accordance with the standard sheets DK 6-1a in DS 60884-2-D1 or EN 60309-2. Mains socket outlets intended for providing power to Class II apparatus with a rated current of 2,5 A shall be in accordance DS 60884-2-D1:2011 standard sheet DKA 1-4a. Other current rating socket outlets shall be in compliance with Standard Sheet DKA 1-3a or DKA 1-1c. Mains socket-outlets with earth shall be in compliance with DS 60884-2-D1:2011 Standard Sheet DK 1-3a, DK 1-1c, DK1-1d, DK 1-5a or DK 1-7a <i>Justification:</i> Heavy Current Regulations, Section 6c		N/A

Shenzhen Anbotek Compliance Laboratory Limited

Address: 1/F., Building D, Sogood Science and Technology Park, Sanwei Community, Hangcheng Street, Bao'an District, Shenzhen, Guangdong, China.

Tel: (86) 755-26066440 Fax: (86) 755-26014772 Email: service@anbotek.com



Hotline

400-003-0500

www.anbotek.com

IEC62368_1D - ATTACHMENT

Clause	Requirement + Test	Result - Remark	Verdict
G.4.2 *	United Kingdom To the end of the subclause the following is added: The plug part of direct plug-in equipment shall be assessed to BS 1363: Part 1, 12.1, 12.2, 12.3, 12.9, 12.11, 12.12, 12.13, 12.16, and 12.17, except that the test of 12.17 is performed at not less than 125 °C. Where the metal earth pin is replaced by an Insulated Shutter Opening Device (ISOD), the requirements of clauses 22.2 and 23 also apply.		N/A
G.7.1	United Kingdom To the first paragraph the following is added: Equipment which is fitted with a flexible cable or cord and is designed to be connected to a mains socket conforming to BS 1363 by means of that flexible cable or cord shall be fitted with a 'standard plug' in accordance with the Plugs and Sockets etc (Safety) Regulations 1994, Statutory Instrument 1994 No. 1768, unless exempted by those regulations. NOTE "Standard plug" is defined in SI 1768:1994 and essentially means an approved plug conforming to BS 1363 or an approved conversion plug.		N/A
G.7.1	Ireland To the first paragraph the following is added: Apparatus which is fitted with a flexible cable or cord shall be provided with a plug in accordance with Statutory Instrument 525: 1997, "13 A Plugs and Conversion Adapters for Domestic Use Regulations: 1997. S.I. 525 provides for the recognition of a standard of another Member State which is equivalent to the relevant Irish Standard		N/A
G.7.2	Ireland and United Kingdom To the first paragraph the following is added: A power supply cord with a conductor of 1,25 mm ² is allowed for equipment which is rated over 10 A and up to and including 13 A.		N/A

Shenzhen Anbotek Compliance Laboratory Limited

Address: 1/F., Building D, Sogood Science and Technology Park, Sanwei Community, Hangcheng Street, Bao'an District, Shenzhen, Guangdong, China.

Tel: (86) 755-26066440 Fax: (86) 755-26014772 Email: service@anbotek.com



Hotline

400-003-0500

www.anbotek.com

IEC62368_1D - ATTACHMENT

Clause	Requirement + Test	Result - Remark	Verdict
--------	--------------------	-----------------	---------

ZC	ANNEX ZC, NATIONAL DEVIATIONS (EN)		N/A
10.5.2 *	<p>Germany</p> <p>The following requirement applies:</p> <p>For the operation of any cathode ray tube intended for the display of visual images operating at an acceleration voltage exceeding 40 kV, authorization is required, or application of type approval (Bauartzulassung) and marking.</p> <p>Justification:</p> <p>German ministerial decree against ionizing radiation (Röntgenverordnung), in force since 2002-07-01, implementing the European Directive 96/29/EURATOM.</p> <p>NOTE Contact address: Physikalisch-Technische Bundesanstalt, Bundesallee 100, D-38116 Braunschweig, Tel.: Int +49-531-592-6320, Internet: http://www.ptb.de</p>		N/A

Shenzhen Anbotech Compliance Laboratory Limited

Address: 1/F., Building D, Sogood Science and Technology Park, Sanwei Community, Hangcheng Street, Bao'an District, Shenzhen, Guangdong, China.

Tel: (86) 755-26066440 Fax: (86) 755-26014772 Email: service@anbotech.com



Hotline
400-003-0500
www.anbotech.com

Photo:

Photo 1



Photo 2



Photo 3



Photo 4



Shenzhen Anbotek Compliance Laboratory Limited

Address: 1/F., Building D, Sogood Science and Technology Park, Sanwei Community, Hangcheng Street, Bao'an District, Shenzhen, Guangdong, China.

Tel: (86) 755-26066440 Fax: (86) 755-26014772 Email: service@anbotek.com



Hotline

400-003-0500

www.anbotek.com

Photo 5



Photo 6



Photo 7



Photo 8

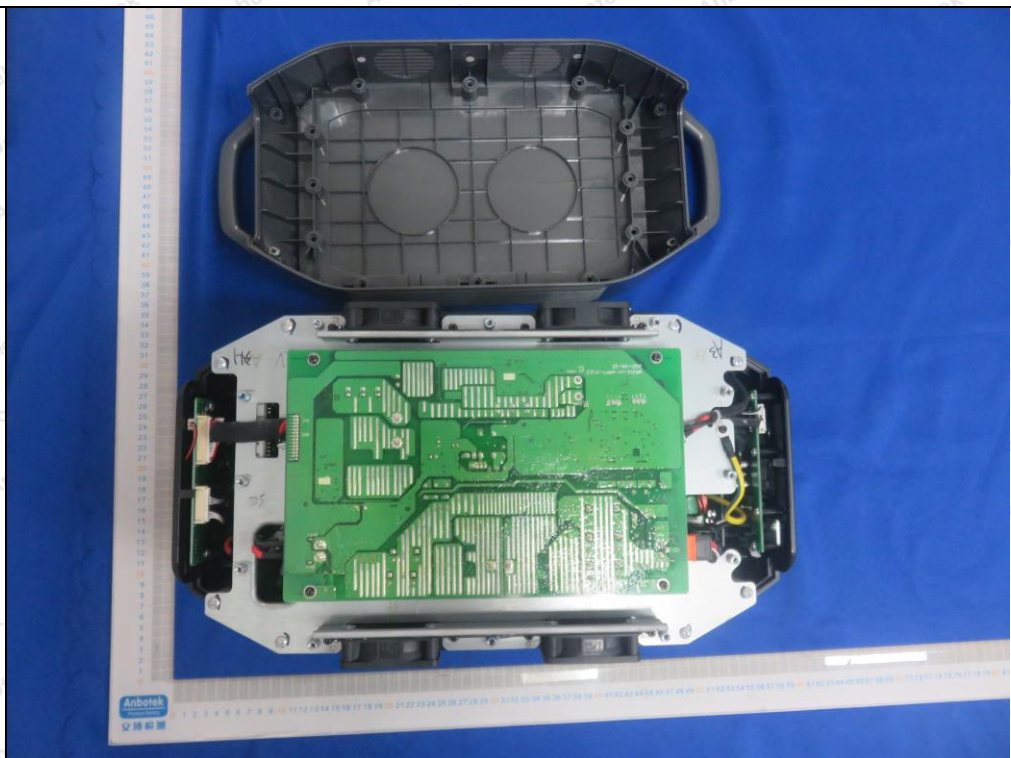


Photo 9

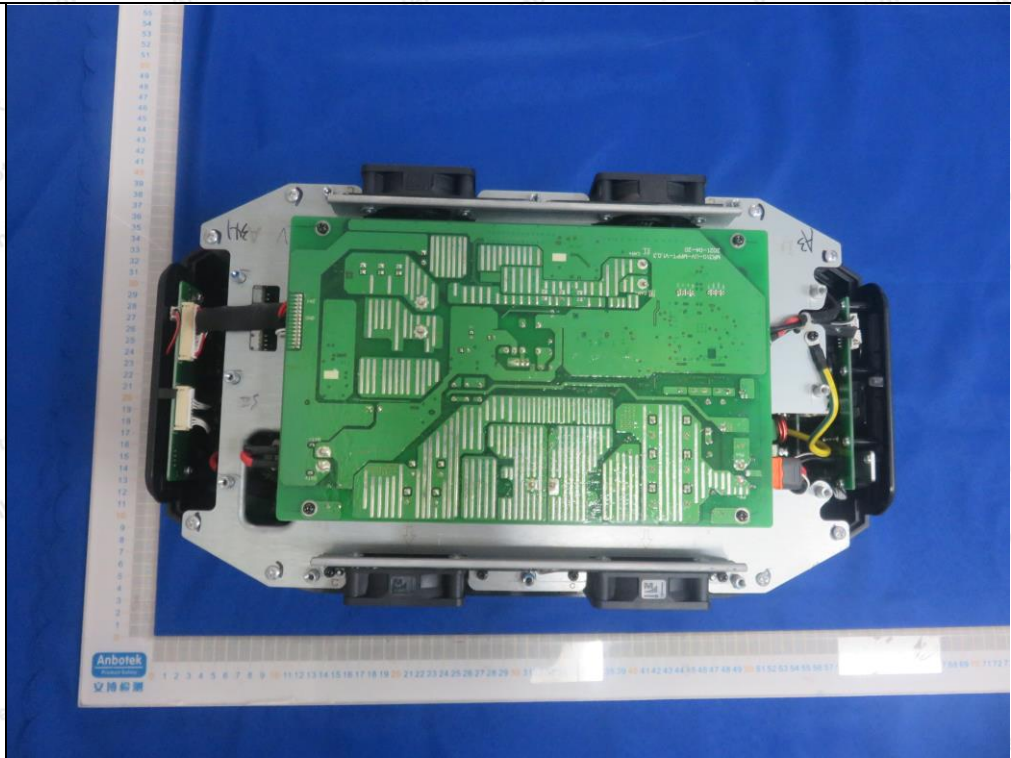


Photo 10

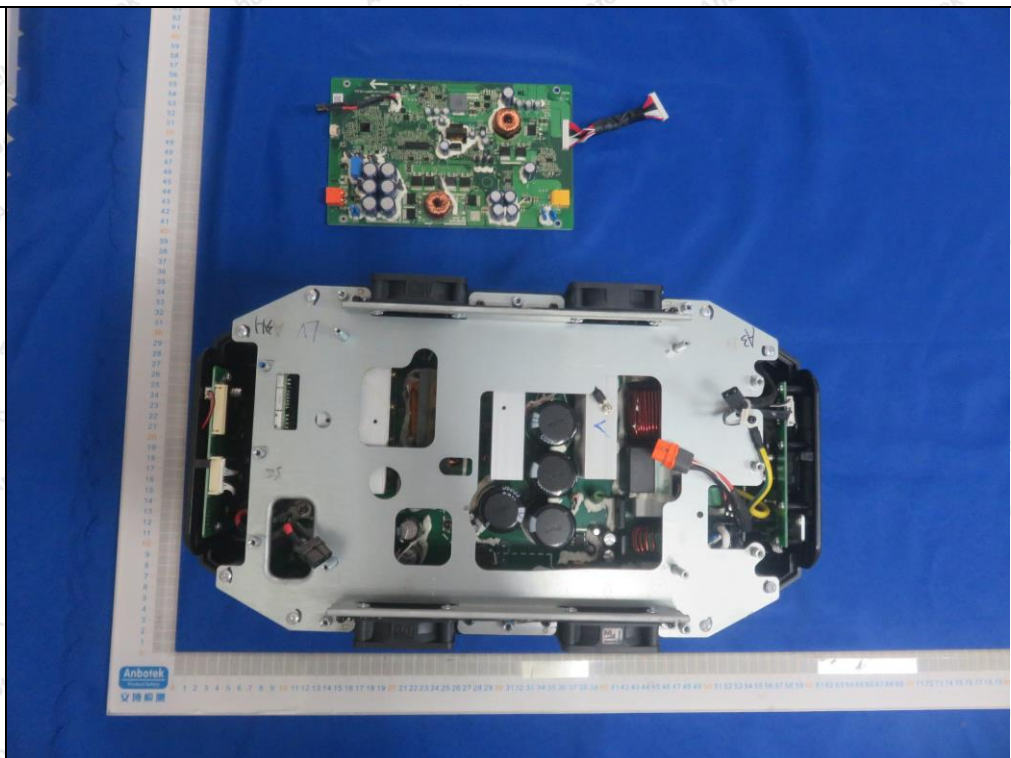


Photo 11

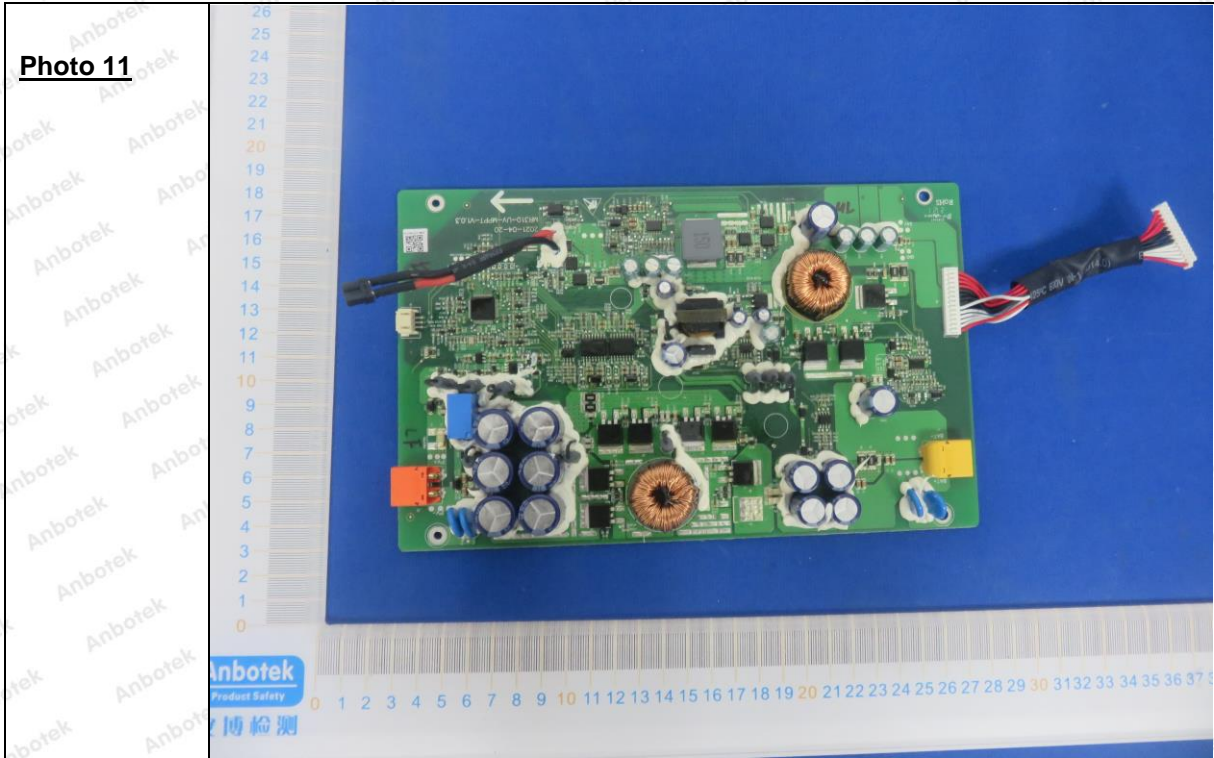


Photo 12

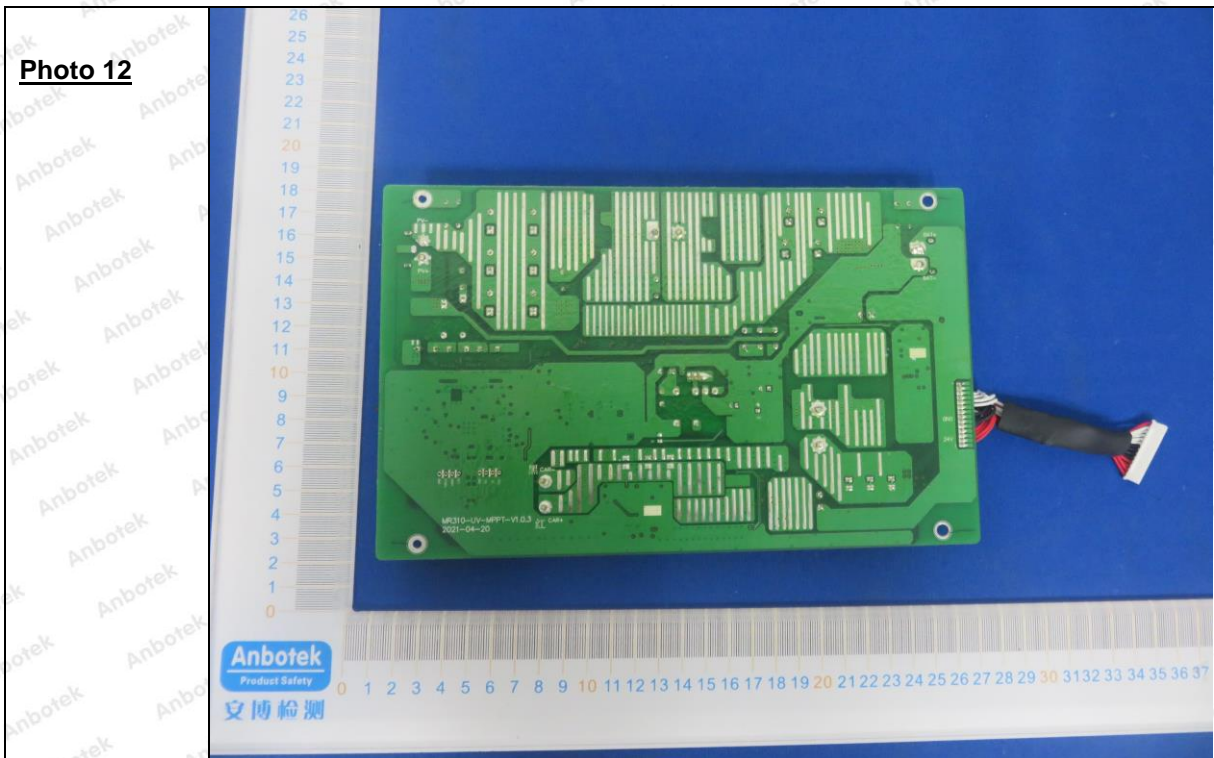


Photo 13

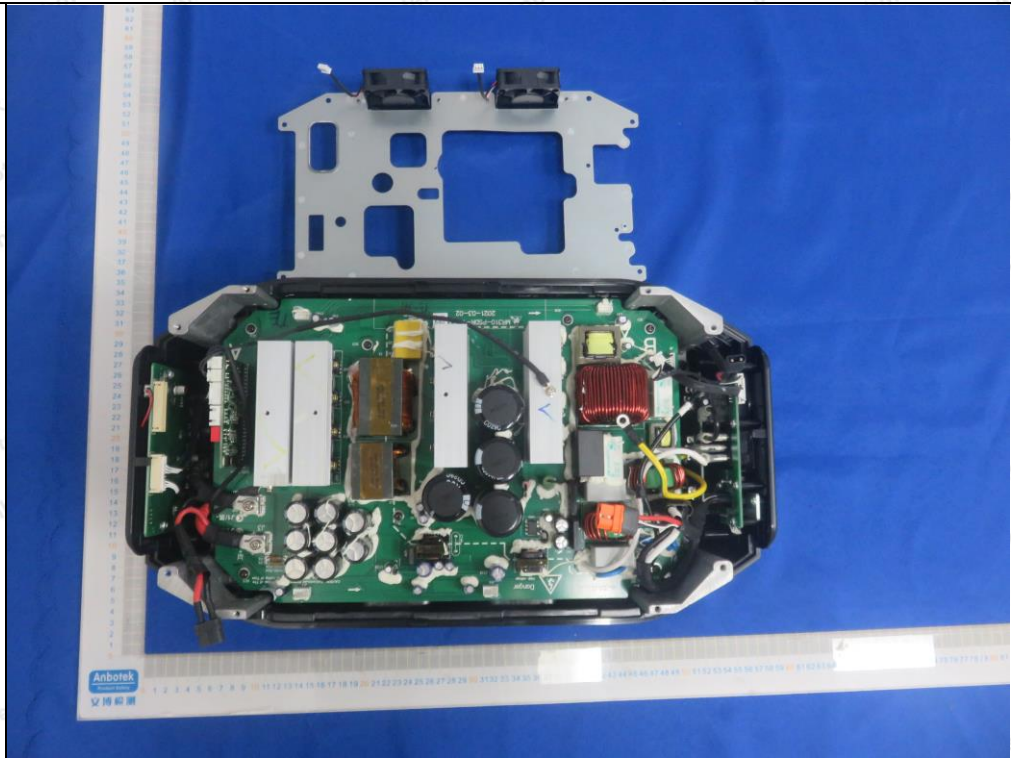


Photo 14

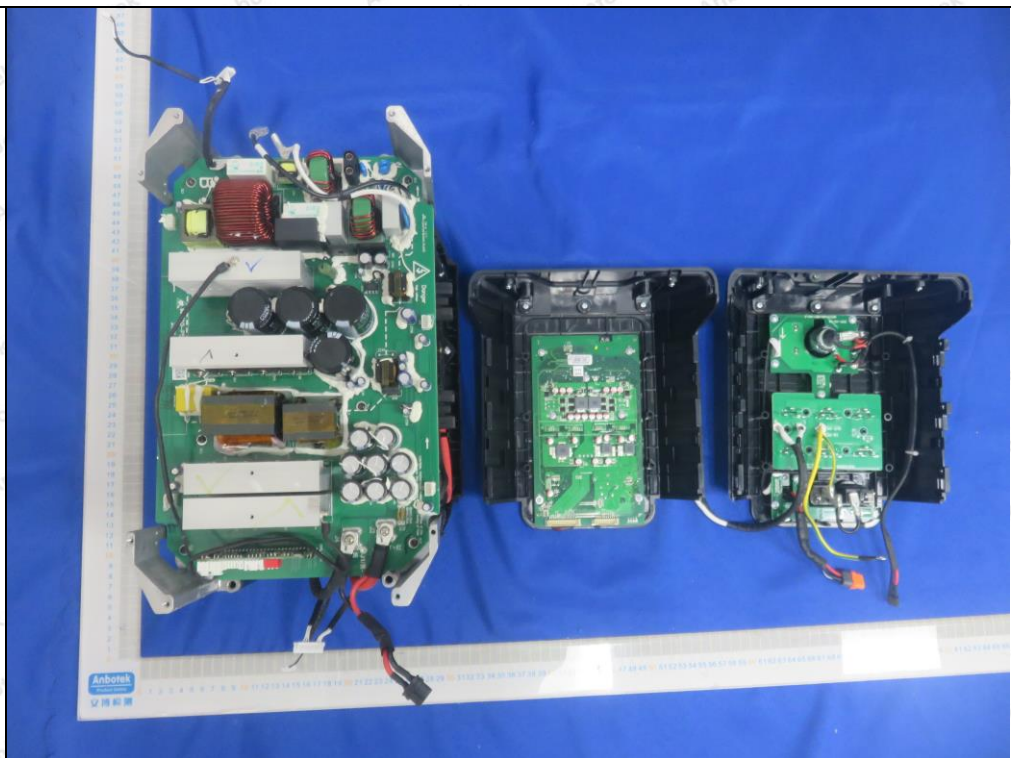


Photo 15

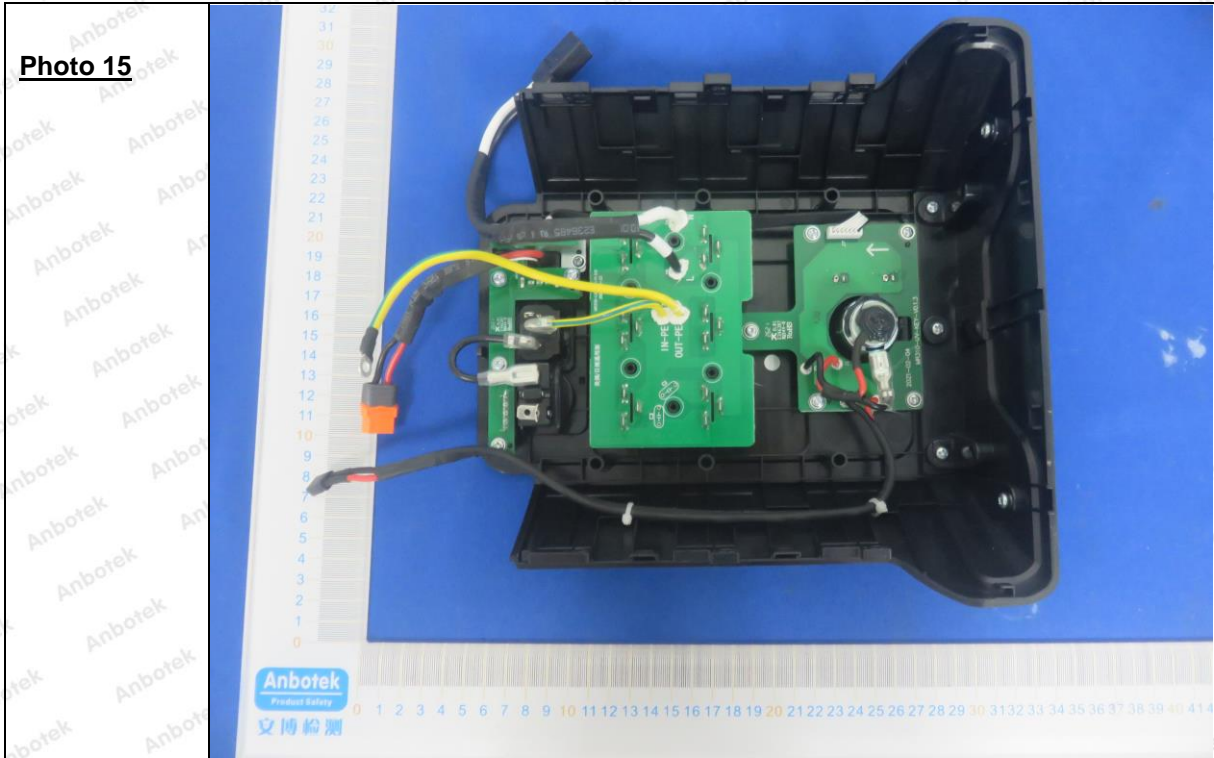


Photo 16

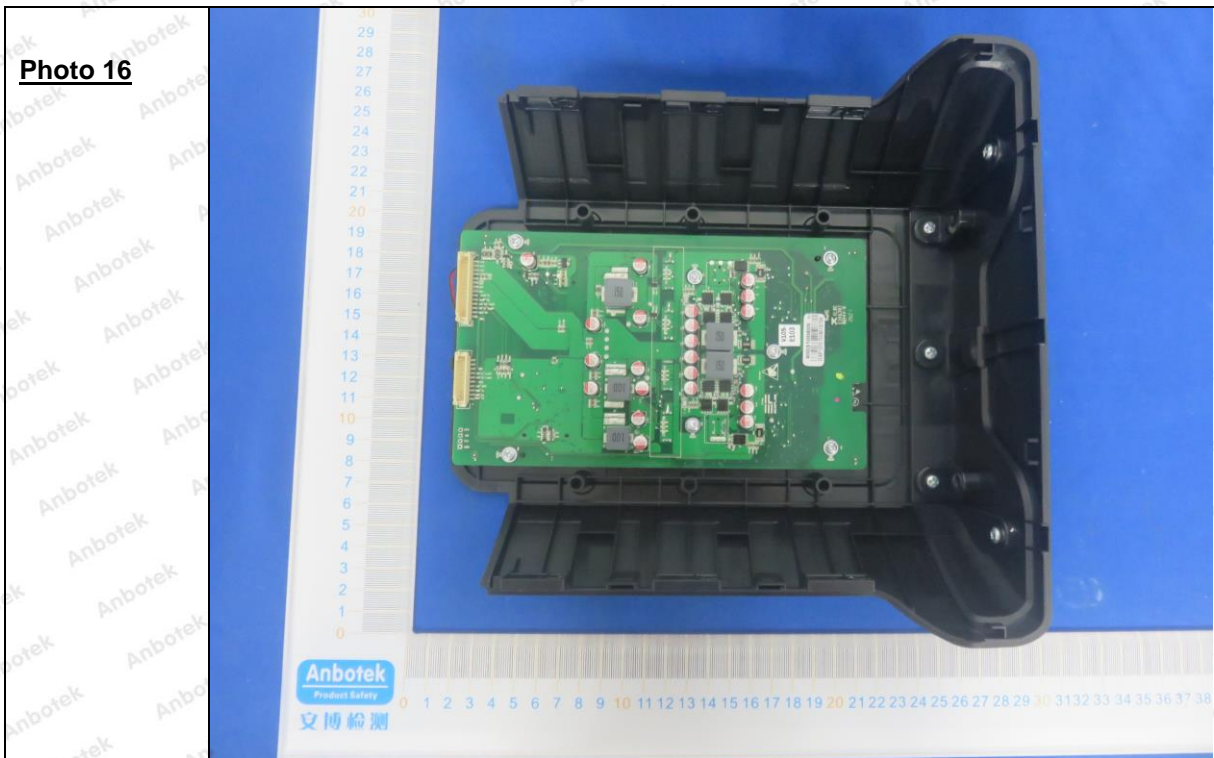


Photo 17



Photo 18



Shenzhen Anbotek Compliance Laboratory Limited

Address: 1/F., Building D, Sogood Science and Technology Park, Sanwei Community, Hangcheng Street, Bao'an District, Shenzhen, Guangdong, China.

Tel: (86) 755-26066440 Fax: (86) 755-26014772 Email: service@anbotek.com



Hotline

400-003-0500

www.anbotek.com

Photo 19

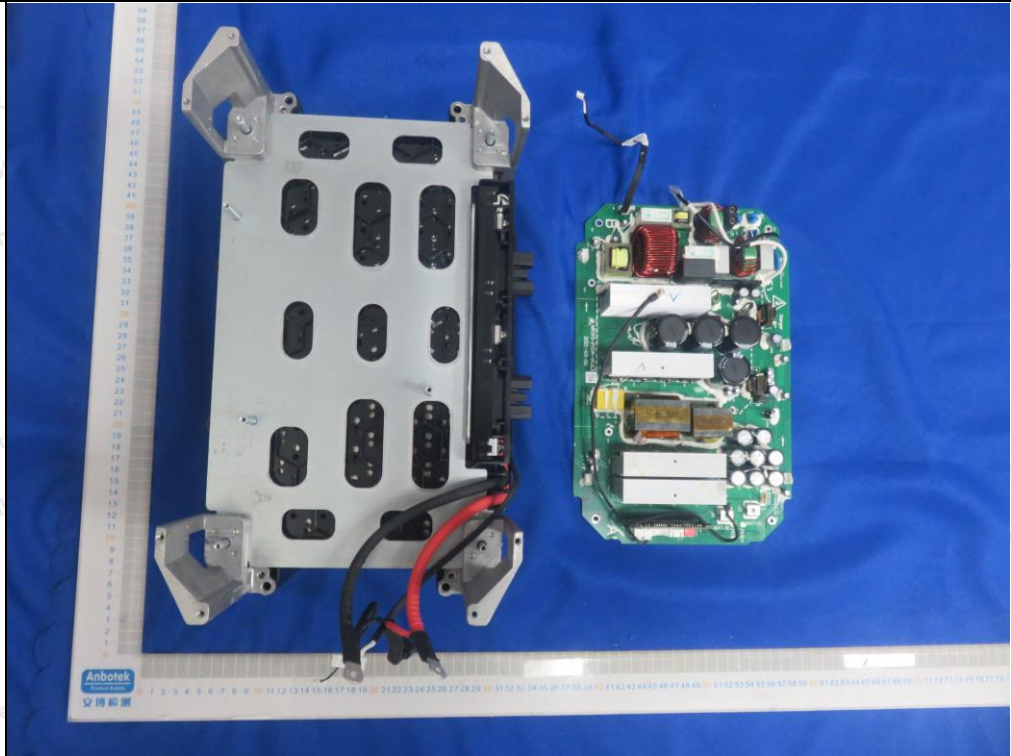


Photo 20

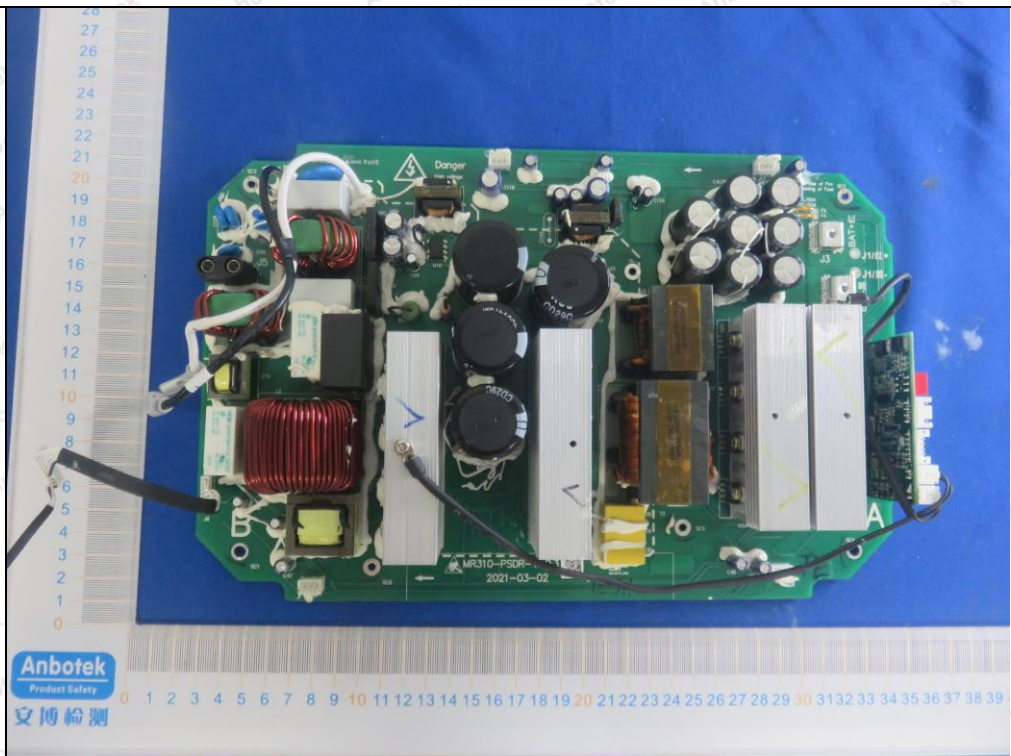


Photo 21

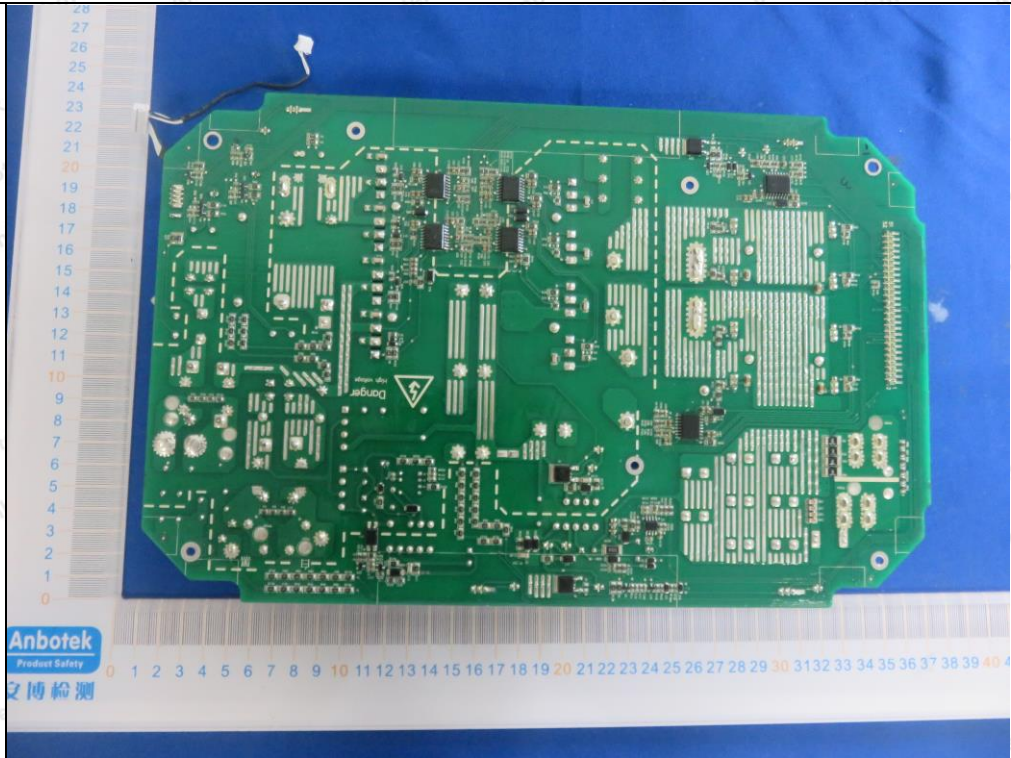


Photo 22

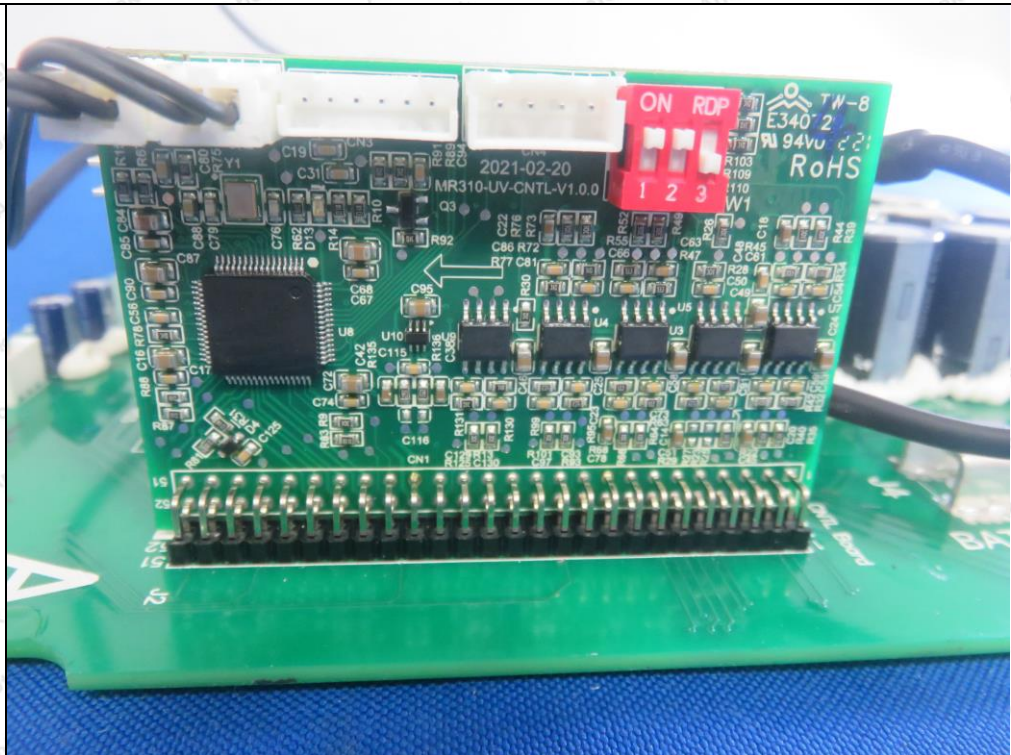


Photo 23

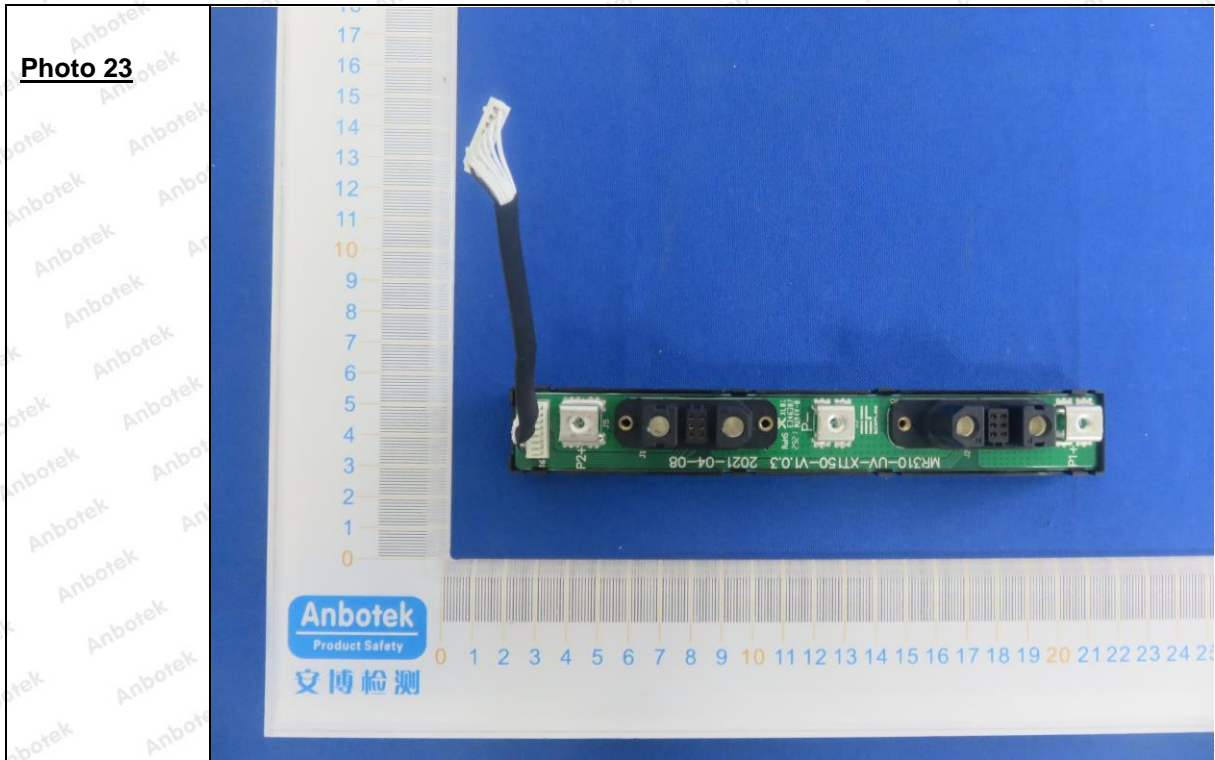
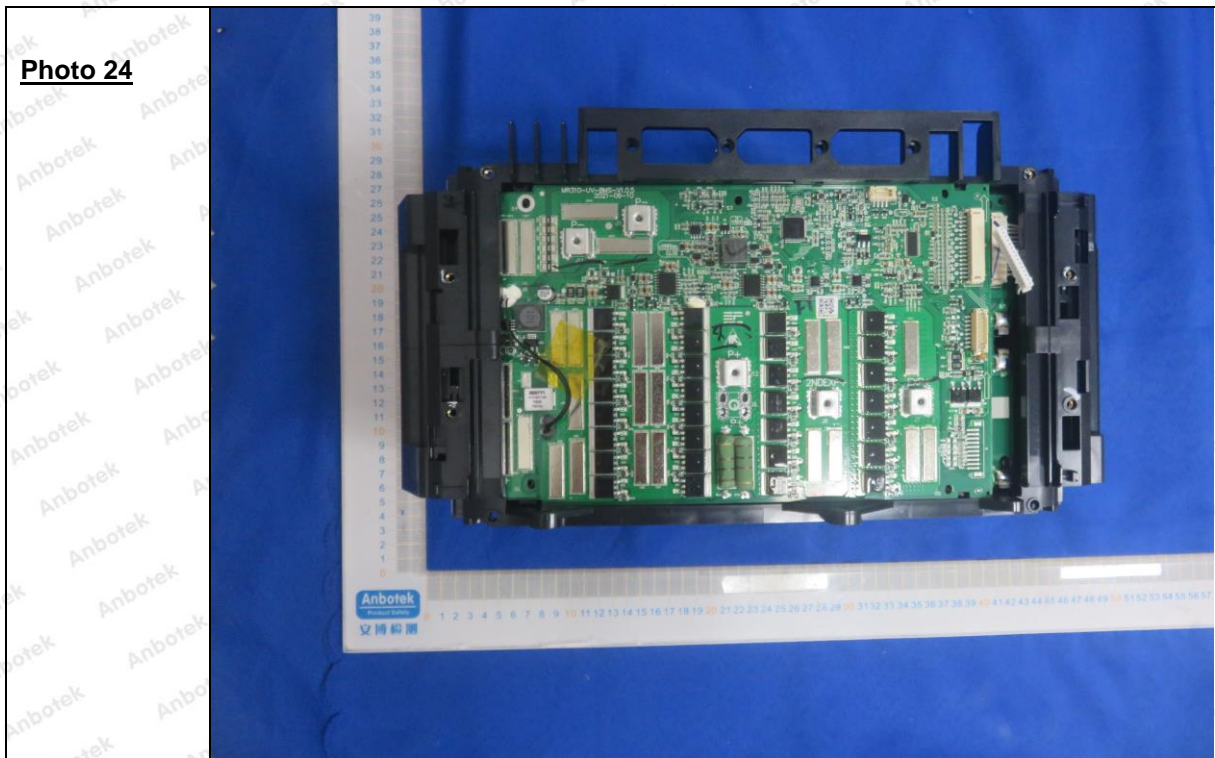


Photo 24



End of the report

Shenzhen Anbotek Compliance Laboratory Limited

Address: 1/F., Building D, Sogood Science and Technology Park, Sanwei Community, Hangcheng Street, Bao'an District, Shenzhen, Guangdong, China.

Tel: (86) 755-26066440 Fax: (86) 755-26014772 Email: service@anbotek.com



Hotline

400-003-0500

www.anbotek.com